

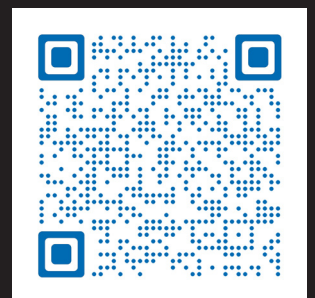


Lord Lawson
SIXTH FORM

LORD LAWSON OF BEAMISH SIXTH FORM

Student Guide 2025/2026

Information for students, parents and carers



Follow us on Instagram
@LordLawsonSixthForm

Meet the Team



Mrs Laidlaw
Assistant Principal
Head of Sixth Form



Miss Milburn
Pastoral Manager



Mrs Goodacre
Deputy Head of
Sixth Form



Mrs Leigh
Careers Advisor

Who to Inform?

Need some pastoral support?

Speak to your tutor, Miss Milburn in the ILC, Mrs Goodacre or Mrs Laidlaw

Need help with your subjects?

Speak to your class teacher or the Head of subject area.

Need help choosing your next steps after the sixth form?

Speak to Mrs Leigh in Y8 base.

Need help with a health related issue?

Speak to your tutor, Miss Milburn, Mrs Goodacre, Mrs Laidlaw or the Health unit.

The School Day

Registration with tutor	8.50 - 9.10am	Period 3	11.30-12.30pm
Period 1	9.10-10.10am	Lunchtime	12.30-1.20pm
Breaktime	10.10-10.30am	Period 4	1.20-2.20pm
Period 2	11.30-12.30pm	Period 5	2.20-3.20pm

Term dates can be accessed in the school information of our website.

Attendance:

We expect students to be on site for 8.45am and to sign in within the ILC or on their registration app. We expect all students to be in school for registration, for key information. In addition, this creates a healthy daily routine and maximises productivity in the morning. Students may leave site however they must attend all lessons, ILC sessions, personal development and enrichment activities.

Work hard:

The school day is a working day, we expect our students to work hard. You will attend all lessons, ILC sessions, personal development lessons and enrichment opportunities. You should use your non-contact time completing independent work to supplement the knowledge acquired in lessons.

Absence policy:

Parents/ carers must report absence by phone or email kmilburn@lordlawson.academy. If you are ill during the day, please come to the ILC and speak to one of the pastoral team and we'll help. It is students' responsibility to catch up any missed work whilst absent. Your attendance will be monitored regularly by tutors and Miss Milburn. In the event of students failing beneath attendance thresholds, letters will be sent home to notify parents / carers.

Great punctuality:

In a work environment, punctuality is valued. In addition, it shows respect for our sixth form community. We expect you to be punctual for all timetabled sessions.

Progress:

All courses at Lord Lawson sixth form are challenging. You will gain regular feedback from your teachers on the progress you are making. We will contact home four times over the course of the sixth form to formally communicate your progress and provide a multitude of opportunities to discuss your progress.

The ILC:

All students studying three sixth form courses will attend six sessions each week in the ILC, independent learning centre. Here students work silently on subject specific work to support classwork.

Food:

Students have access to Costa in the Sixth Form Common Room all day. This sells a range of hot and cold food and drinks. Students can also access the main canteen and vending machine in the ILC.

What does success look like in Sixth form?

Together We Grow, Learn and Succeed



Academic Excellence

- Strong Results: 77% of all grades awarded were A*-C, with 45% at A*-B.
- Top Subjects: Mathematics, Sociology, Psychology, Health & Social Care, and History saw exceptional performance.
- University Destinations: Students progress to top universities including Durham, Newcastle, Warwick, and York.



Future-Ready Pathways

- University & Apprenticeships: Many students secure places at prestigious universities or gain higher-level apprenticeships in fields like construction and civil service.
- Career Preparation: Strong links with local businesses and universities help students see purpose in their studies and prepare for life beyond school.



Personal Development

- Leadership Opportunities: Roles such as Head Student, Mental Health Mentor, and Well-being Ambassador help students grow in confidence and responsibility.
- Inclusive Community: Our Sixth Form celebrates diversity and promotes tolerance through groups like 'Pride' and reading ambassador programmes.



Supportive Environment

- Outstanding Pastoral Care: A dedicated team of tutors supports students academically and emotionally.
- Exclusive Facilities: Sixth Form students benefit from their own Independent Learning Centre and Common Room.
- Personalised Guidance: Staff work closely with students to identify gaps in learning and provide tailored support.



Enrichment and Opportunities

- Beyond the Classroom: Students engage in drama, music, performing arts, and a wide range of enrichment activities.
- Visits & Talks: Regular events help students imagine their future and connect with professionals and academics.



Our Guarantee

- Help you find the right courses.
- Support you throughout your studies.
- Offer a wealth of extra opportunities.
- Keep you informed about your progress.

Success at Lord Lawson Sixth Form means becoming the best version of yourself - academically, personally, and professionally.

Successful Independent Study

Independent study is a key part of success in Sixth Form. At Lord Lawson, students are encouraged to take ownership of their learning and develop habits that support academic achievement and personal growth.



Time Management

- Create a weekly study schedule and stick to it.
- Prioritise tasks based on deadlines and importance.
- Break study sessions into manageable chunks with regular breaks.



Goal Setting

- Set clear, achievable academic and personal goals.
- Review progress regularly and adjust goals as needed.
- Celebrate milestones to stay motivated.



Study Environment

- Choose a quiet, well-lit space free from distractions.
- Keep your study area organised and stocked with necessary materials.
- Use noise-cancelling headphones or calming music if helpful.



Use of Resources

- Utilise textbooks, online platforms, and school-provided materials.
- Attend workshops and revision sessions offered by staff.
- Make use of the Independent Learning Centre and library.



Self-Reflection

- Regularly assess your understanding of topics.
- Identify areas of strength and improvement.
- Use reflective journals or learning logs to track progress.



Seeking Support

- Ask teachers and tutors for help when needed.
- Collaborate with peers through study groups.
- Access pastoral support for emotional and academic wellbeing.

Methods of Independent Study

1. Active Recall

Test yourself on key concepts without looking at notes.

Use flashcards (e.g. Quizlet) to reinforce memory.

Write down everything you remember about a topic, then check for gaps.

2. Spaced Repetition

Review material at increasing intervals over time.

Helps move information from short-term to long-term memory.

Combine with flashcards or revision timetables.

3. Mind Mapping

Create visual diagrams to connect ideas and themes.

Great for subjects like History, Biology, or English Literature.

Helps with essay planning and understanding big-picture concepts.

4. Note Summarising

Rewrite class notes in your own words.

Use bullet points, diagrams, and colour coding.

Focus on understanding, not just copying.

5. Past Paper Practice

Use exam board websites to access real exam questions.

Time yourself to simulate exam conditions.

Review mark schemes to understand how answers are graded.

6. Self-Quizzing

Create your own quizzes or use online platforms.

Ask friends to test you or form small study groups.

Helps identify weak areas quickly.

7. Independent Reading & Research

Go beyond the textbook: read articles, watch documentaries, or listen to podcasts.

Use school library resources or trusted online sources.

Develop critical thinking and deeper subject knowledge.

8. Study Timetables

Plan weekly study slots for each subject.

Include breaks and time for hobbies to avoid burnout.

Stick to a routine to build discipline.

9. Teach Someone Else

Explaining a topic to a friend or family member helps reinforce your understanding. If you can teach it, you truly understand it.

10. Digital Tools

Use apps like Notion, Google Keep, or OneNote to organise notes.

Use Pomodoro timers to stay focused (25 mins study, 5 mins break).

Track progress and set goals.



Personal Development Programme

SIXTH FORM



Lord Lawson of
Beamish Academy

PERSONAL DEVELOPMENT CURRICULUM 2025 - 2026

HALF TERM	YEAR 12	YEAR 13
1	Health and Wellbeing	UCAS and Apprenticeships
2	Health and Wellbeing	Career and Risk Management
3	Sexual Health and Healthy Relationships	Managing Personal Safety
4	Employment Rights and Responsibilities	Leaving Further Education
5	Revision and Study Skills	
6	Bullying, Discrimination and Life After Lord Lawson	

Enrichment

EPQ (Extended Programme Qualification)

EPQ is an A-level standard standalone qualification designed to extend and develop students' abilities beyond the A-level syllabus and prepare for university or their future career. It can be taken as an extension of other Level 3 qualifications or vocational qualifications and is worth half an A-level (up to 28 UCAS points). The EPQ is recognised by universities and employers and many universities make lower A-level offers to students undertaking an EPQ.

Students lead their own projects, planning and carrying out research on a topic that they've chosen. They can take inspiration from something touched on in class or something personal and unrelated to their studies. This research is then used to produce a written report and, in the case of practical projects, an artefact or a production.

Students can develop skills which are valuable for higher education, including:

- become more critical, reflective and independent learners
- develop and apply decision-making and problem-solving skills
- increase their planning, research, analysis, synthesis, evaluation and presentation skills
- learn to apply technologies confidently
- demonstrate creativity, initiative and enterprise.

Student Leadership Opportunities

The Student Leadership Team offers sixth formers a unique opportunity to develop essential leadership, communication, and organisational skills while making a real impact on school life. Members of the team represent the sixth form student body through a variety of roles, contributing to key decisions, supporting school events, and leading initiatives that enhance the learning environment for all.

It's a chance to:

- Develop leadership skills through planning projects, mentoring younger students, and chairing meetings.
- Influence school policy by providing student perspectives to staff and governors.
- Organize and run events such as charity fundraisers, assemblies, and enrichment activities.
- Build your university and career profile, demonstrating initiative, teamwork, and responsibility.

The Student Leadership Team is open to all motivated sixth formers who want to make a difference, challenge themselves, and leave a lasting legacy in the school community.



Enrichment



First Aid

Students work with St John's Ambulance, who deliver relevant, life-saving first aid skills in their 'Street First Aid' sessions, tailored to our sixth form students.

Through interactive sessions based on real-life, first aid situations that are relevant to many young people's lives today, students will learn practical skills while improving their confidence and knowledge when dealing with emergency situations.

Sessions cover:

- responding to a catastrophic bleed
- dealing with an alcohol or vape spiking incident
- performing a primary survey and CPR
- how first aid situations affect mental health and wellbeing, and how to get support



British Sign Language

The BSL Enrichment programme offers students the opportunity to explore both the language and culture of the Deaf community. Sessions provide a fascinating introduction to the history and development of BSL as a recognised language, while also raising awareness of the experiences and perspectives of Deaf and hard-of-hearing people. Students will begin to acquire practical communication skills, including finger spelling, essential greetings, and everyday signs, enabling them to introduce themselves confidently and begin simple conversations with BSL users. Alongside this, students will develop strategies for inclusive communication, such as fingerspelling unfamiliar words.

Beyond learning the basics, the enrichment emphasises the importance of accessibility and inclusion. Students are encouraged to reflect on how even small efforts—such as using a few signs—can help build understanding, reduce barriers, and make members of the Deaf community feel welcomed and respected. This enrichment not only equips students with a valuable life skill but also fosters empathy, cultural awareness, and a deeper appreciation of linguistic diversity.

Fitness

Our fully equipped fitness suite is available exclusively to sixth form students during their enrichment hour. Whether you are new to exercise or already have a regular training routine, the suite offers a supportive environment to develop your fitness, strength, and wellbeing. Students can access a wide range of equipment, including cardio machines, free weights, and resistance training stations. Staff are on hand to give guidance on technique as well as to ensure safe and effective use of all facilities. The fitness suite is not just about physical health—it's also a space to boost mental wellbeing, relieve stress, and build confidence. Many students find that regular exercise helps them focus better in lessons and improves their overall energy levels.



Enrichment

Y7 in-class support

As part of the enrichment programme, sixth form students have the opportunity to take on a valuable mentoring role by supporting Year 7 lessons. This experience allows you to work alongside teachers, providing guidance and encouragement to younger students as they settle into secondary school life.

You might be helping individuals who need a little extra support, leading small group activities, or assisting with classroom tasks to keep lessons running smoothly. This role is an excellent way to develop leadership, patience, and communication skills, while also making a real difference to the learning and confidence of younger pupils.

For those considering careers in teaching, childcare, youth work, or any role involving teamwork and responsibility, this is a fantastic opportunity to gain first-hand experience. It's also a chance to contribute positively to the school community and act as a role model for our newest students.

Sports Leaders

The course aims to provide pupils with employability skills through leadership and is ideal for developing communication, self-belief, teamwork, self-management and problem solving.

Pupils will complete 14 hours of leadership within our community to demonstrate skills and behaviours learned over the course. This can be achieved through local sports clubs and feeder schools. Students will also complete a written booklet to reflect on their planning and delivery of these events. Students are expected to attend all sessions and complete work independently. It is also worth up to 16 UCAS Points!

The Sports Leaders course allows you to gain an insight into lesson and event planning. It also helps develop leadership and adaptability skills that can then be transferred to wider life. It's perfect if you are considering a career in the following: Coaching, Teaching, Events Management, SEN Management, Sports Development.



Expectations

Lord Lawson Sixth Form will:

1. Provide courses which prepare you for the public examinations appropriate to the progress you make and to help continue your general, personal, social and health education as appropriate to your individual needs. We achieve this by:
 - Providing you with teaching and facilities appropriate to your course.
 - By encouraging you in your work and by assessing your progress and reporting on this.
 - By preparing you for public examinations.
2. Introduce and prepare you for opportunities in employment, training and further and higher education, through assemblies, a tutorial programme, educational visits and outside speakers.
3. Provide opportunities for supported self-study and independent study in the Independent Learning Centre (ILC) which is designated for quiet study.
4. Provide opportunities for individual guidance on academic and pastoral issues via subject teachers, subject leaders, tutors, the Head of Sixth Form.
5. Ensure that there are opportunities for you and your parents/carers to discuss your progress.
6. Celebrate your success in the form of the rewards policy through praise points, purple reward cards, Golden Tickets and Awards ceremonies.

As a Lord Lawson Sixth Form Student I will:

1. Attend the Lord Lawson Sixth Form on all term days other than when absence is unavoidable.
2. Sign into Lord Lawson upon arrival every day and attend tutor everyday.
3. Attend all the classes, personal development lessons, enrichment activities, ILC study sessions and specified additional opportunities which make up your programme of study.
4. Complete all set work by the agreed time and to the best of my ability.
5. Undertake independent support work and background reading which is appropriate to your courses.
6. Make appropriate use of the Sixth Form study facilities.
7. Discuss with your tutor and/or subject teachers at the earliest opportunity any personal and academic difficulties that are affecting your work. The Sixth Form pastoral/curriculum staff can only provide help if they are made aware you are experiencing difficulties.



Expectations

8. Participate as fully as possible in the life of the Sixth Form.
9. Have a minimum attendance level of 95%.
10. Ensure all medical appointments and other appointments are arranged out of school hours where possible. We understand that on occasion this may prove impossible, however, evidence of these appointments must be seen by Miss Milburn before they are authorised.
11. Notify my tutor, teachers and Miss Milburn in advance of any planned absence; it is a students' responsibility to catch up on any missed work by the deadline set by the teacher. (Note: The permission of Miss Milburn or Mrs Laidlaw must be sought in advance for any periods of prolonged planned absence).
12. Abide by the Dress Code - Please see opposite.
13. Abide by the Code of Conduct – Please see below.

Code of Conduct

The overriding principle of the Lord Lawson Code of Conduct is: 'You are a role model to younger students. Set the best example you can to others at all times'

14. **Behaviour:** You are responsible for showing respect for the needs of others in your behaviour and actions. Sixth Form students are expected to set a standard to others in the Academy.
15. **Attendance:** It is your responsibility to ensure you attend all timetabled lessons, study lessons and tutorials. This is compulsory. Failure to contact the Sixth Form over absence will result in unauthorised absences on your school record which will lead to attendance actions from the Sixth Form Leadership Team, such as letters home and parent / care / student meetings.
16. **Punctuality:** It is your responsibility to ensure you attend all timetabled classes and tutorials punctually.
17. **Work:** To achieve your individual learning goals you will be expected to work hard and complete work within agreed deadlines.
18. **Sixth Form Environment:** It is expected that you will take pride in the appearance of the Sixth Form area and this includes being responsible for clearing away your litter in classrooms, the ILC and the Common Room.
19. Violent conduct towards others is not permitted. This would include bullying (physical or emotional) and fighting of any kind.
20. Bringing unauthorized individuals or groups into the Sixth Form without permission is not permitted.
21. **Expectations:** Being a student at Lord Lawson Sixth Form means commitment to all aspects of, Academy life; this includes academic and culture ethos.
22. **Mobile phones:** You are permitted to use mobile phones and headphones in the ILC and the Sixth Form Common room. They must not be on desks in classrooms or in use in corridors.
23. **Healthy Lifestyle:** You are not allowed to bring energy drinks onsite. Any seen onsite will be confiscated and not returned.

Dress Code



Sixth Form students are not required to wear uniform but are expected to be appropriately dressed for the school environment in which they work. It is at the discretion of the Senior Leadership Team as to whether a student is deemed to be appropriately dressed for school.

For avoidance of doubt, the following are not accepted items within the dress code policy:

- Offensive slogans
- Ripped Jeans
- Sportswear – this includes leggings, joggers, tracksuit bottoms and football shirts
- All styles of shorts – this includes cycling and football shorts
- Low cut or strappy tops (thin/spaghetti style straps)
- Sliders, flip flops and Crocs

Further points to note:

- Tops worn must meet the trousers/skirt without a gap
- Skirts/dresses should be of a suitable length. This length should be just above the knee or longer
- Hats, hoods and caps should only be worn outside

Punctuality

Punctuality Policy

Sixth Form students should be onsite for 8.40am ready for their day ahead. It is vital to be on time for Sixth Form, this is an important life skill. We have a four minute allowance, therefore if you arrive on site at 8.55am, this constitutes being late.

In a half term:

First lateness

30 minutes after school detention that day

Second lateness

45 minutes after school detention that day

Third lateness

60 minutes after school detention that day

Any lateness from here on in will be a 60 minutes after school detention that day.

There will be formal warnings after 3, 6 and 10 times of lateness.



Start time: 8.50am

Lateness to lessons

20 minutes after school detention the same day

We expect students to arrive promptly to lessons, ready to learn so they can achieve their potential.

Attendance



Lord Lawson
SIXTH FORM

ATTENDANCE MATTERS

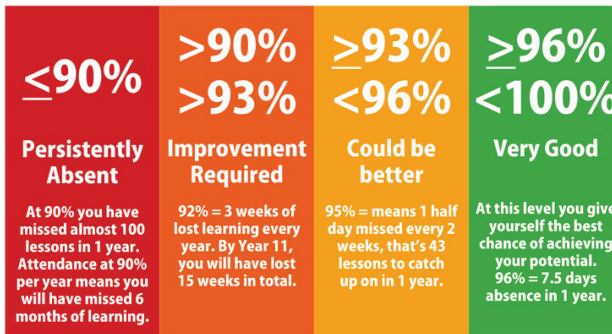
AT LORD LAWSON OF BEAMISH ACADEMY SIXTH FORM



ATTENDANCE
AFFECTS YOUR
LEARNING



ATTENDANCE
AFFECTS YOUR
FUTURE



100%
Perfection



LATENESS = LOST LEARNING

Did you know attendance impacts upon achievement?

Employers want a work force that is committed and punctual. Studies show that there is a clear link between poor attendance and low academic achievement. Employees who have 8 good GCSEs earn on average £150 per week more than those who do not.

Minutes lost each day	5 mins	10 mins	15 mins	20 mins	25 mins
School days lost per year	3 days	6.5 days	10 days	13 days	19 days

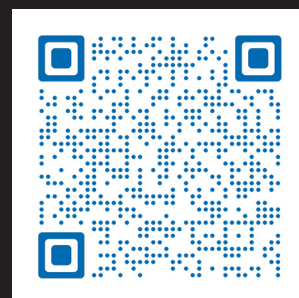


Lord Lawson
SIXTH FORM

LORD LAWSON OF BEAMISH SIXTH FORM

Student Guide 2025/2026

Information for students, parents and carers



Follow us on Instagram
@LordLawsonSixthForm