



Lord Lawson of
Beamish Academy

SIXTH FORM PROSPECTUS 2026



WELCOME

Dear Prospective Sixth Former,

Here at Lord Lawson of Beamish Academy we are proud of our Sixth Form - it is a stimulating place to study, to make friends, to thrive and to grow in character. You are important to us, and we believe we can offer you the best sixth form experience. We guarantee to help you find the right courses, support and challenge you in your studies, offer you a wealth of additional opportunities, and give you regular feedback to enhance the progress that you are making. I look forward to welcoming you to your sixth form!

Dr Andrew Fowler

Principal, Lord Lawson of
Beamish Academy



At Lord Lawson Sixth Form, we pride ourselves on fostering a vibrant, inclusive, and ambitious learning environment, where you are empowered to reach your full potential. Our dedicated staff provide expert guidance and personalised support, helping every individual to thrive academically and personally. With a broad curriculum and excellent facilities, our strong focus is on preparing you for university, apprenticeships, and employment. Our Sixth Form is a place where your aspirations are nurtured, and you shape your future. We have a strong track record of developing confident, independent learners who are ready to make a positive impact in the world. We look forward to you joining us in September.

Mrs Jane Laidlaw

Assistant Principal, Head of Sixth Form



WELCOME

	2
Together	4
We grow	5
We learn	6
We succeed	7
We support you	8
Subjects we offer	10 - 37
Enrichment	38
What next?	39

Contact Us

0191 433 4026

www.lordlawson.academy

 lordlawson2024  llobsixthform

Birtley Lane, Birtley, County Durham, DH3 2LP

TOGETHER

AT LORD LAWSON SIXTH FORM

WE GROW

We know you. You are not just a name, or even a number, you are a unique individual. You benefit from unrivalled personalised academic and pastoral support, both in and out of lessons.

WE SUCCEED

We support you. We will inspire and support you to achieve your aspirations. Structured independent study lessons help you to develop your understanding and resilience. It's not going to be easy but hard work pays off - you will succeed here.

WE LEARN

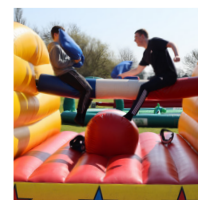
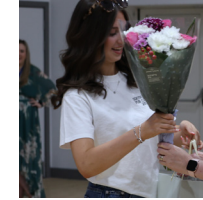
We are experts. You have teachers who are invested in getting the absolute best from you. You will have small class sizes which allow you to accelerate your learning.

We listen to you. Our sixth form student leadership team works with us to improve the sixth form experience for you.

WE DO IT TOGETHER

We are a team. You get personalised support. You get expert teachers and leaders. You get the best learning experience. You get a voice. You get inspired and supported to achieve your very best. We get the thrill of you succeeding.

WE GROW



PERSONALISED EXPERIENCE

WE LEARN

What can you study?

You can choose to study a range of interesting and diverse subjects.

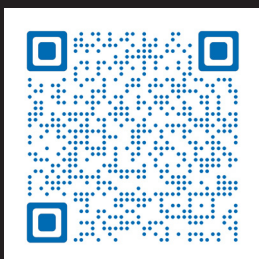
You learn from our expert specialists.

You can choose to study A-Level or vocational subjects or a mixture of both.

The subjects that we offer are in the table below. You need to choose subjects from different blocks. The blocks have been designed to give you choice and variety and to help you choose subjects that will support you to your future destination.

Block A	Block B	Block C	Block D
3D and Fine Art	Chemistry	Applied Science	Drama and Theatre
Biology	Computing	Dance	French
Business	English Language	Geography	German
Dance	Further Mathematics	History	Graphics
English Literature	Religious Studies	Music	Mathematics
Health and Social Care	Sports Science	Photography	Politics
Sociology		Physics	Psychology

**Apply online
here:**



WE SUCCEED

“

I got As in French, German and Politics and a B in History. I'm studying Modern Languages and Cultures with a year abroad at Durham (my languages are advanced French and German and beginner's Italian).

”



CHLOE

“

Sixth Form helped me develop the mental capacity and the habit of hard work necessary to learn a new language. It also helped me develop my interpersonal skills, which has become necessary as I spend my time talking to lots of people from varying backgrounds and circumstances.

”



JAKE

“



GEORGIA

I studied A Level Dance, Drama and English Literature and went onto train at Laine Theatre Arts London, after being offered a fully funded place to study a Diploma in Professional Musical Theatre and Dance. The skills I gained through my varied experiences in sixth form supported me in becoming the professional dancer I am today. I have most recently performed in the musical Berlin, Berlin in Germany, and with an upcoming role in Aladdin at the Theatre Royal, Newcastle and having been invited to audition at the Moulin Rouge, Paris the future is very exciting. I would encourage all passionate performers to study Performing Arts at Lord Lawson sixth form. I loved my time on the Lord Lawson stage and greatly appreciate the continuous support I have received since from the Performing Arts department.

”

WE SUPPORT YOU

Specialist Teams

We have a specialist team that can help you achieve your potential and enjoy your sixth form journey. The team can help you with:

- special educational needs and disabilities (SEND) and EHCP support
- physical and sensory disabilities
- specific learning difficulties such as dyslexia or neurodiversity
- social and emotional health and well being
- career advice
- exam arrangements
- finance (see below).

We support you financially. Lord Lawson sixth form bursary (up to £1200) is available for eligible students to cover the cost of:

- travel
- stationery and equipment
- clothing for sixth form purposes
- other circumstances that support learning and progression.

Up to
£1200
bursary

WE SUPPORT YOU

Free Benefits

FREE SCHOOL MEALS

Eligible students are also given free lunches.

OTHER FREE BENEFITS FOR EVERYONE:

- access to gym facilities
- free IT facilities
- free parking
- school counsellor
- visits to some local universities, apprenticeship providers and employers.

“HAVING A
**DEDICATED
SIXTH FORM
COSTA COFFEE
SHOP AND
FREE GYM
ACCESS IS
AMAZING.**”



SUBJECTS WE OFFER

3D Design	11	Politics	29
Biology	12	Psychology	30
Business	13	Religious Studies	31
Chemistry	14	Sociology	32
Dance	15		
Drama and Theatre	16	Vocational Subjects	
English Language	17	Applied Science	33
English Literature	18	Computing	34
Fine Art	19	Health and Social Care	35
French	20	Music	36
Further Mathematics	21	Sports Science	37
Geography	22		
German	23	Enrichment Opportunities	38
Graphics	24	What Next?	39
History	25		
Mathematics	26		
Photography	27		
Physics	28		

3D Design

Choose 3D Design if you are interested in...

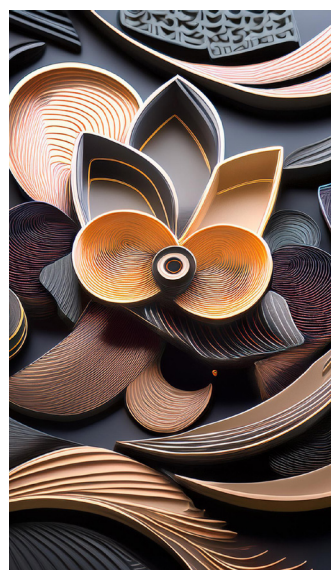
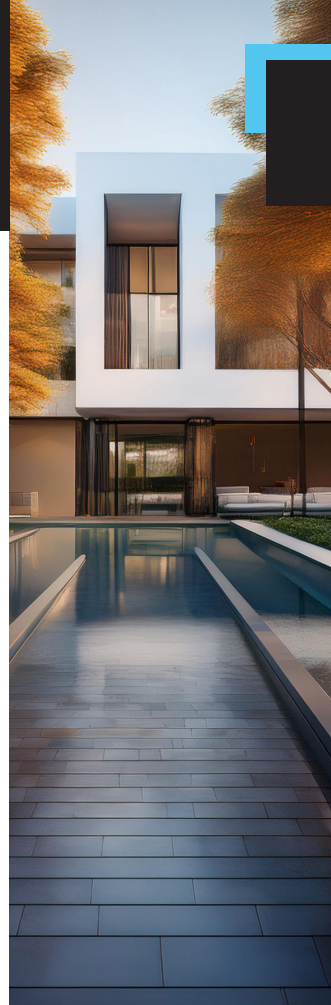
- creating 3D objects and products that shape the world we live in
- exploring a context, personal and relevant to you
- investigating contemporary artists, designers and architects
- experimenting with a wide range of materials and surface finishes
- converting 2D design sketches into computer aided design files
- hands-on practice, utilising hand tools, machines and computer aided manufacturing processes
- turning ideas into fully resolved 3D objects, products and artefacts.

Where will it take you?

- industrial design
- product design
- interior architect
- architecture
- exhibition design
- stage set design
- prop maker.

Entry requirements:

Grade **4** or above in a GCSE art-based subject. Students who have not studied an art-based subject will be considered on an individual basis and will need to produce a portfolio of work.



Biology

Choose Biology if you are interested in...

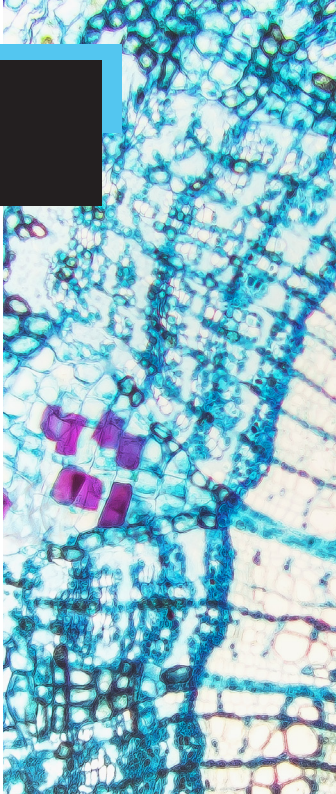
- how the human body works
- how we inherit our characteristics
- the molecules that make up our body
- how ecosystems interact.

Where will it take you?

- medical careers (nursing/doctor/dentist)
- forensic biologist
- pharmacology
- ecologist
- marine biologist
- biochemical engineer.

Entry requirements:

Grade **6 - 6** in Combined Science



Business

Choose Business if you...

- are interested in different business environments
- want to understand how a business creates a strategic plan
- are interested in how a diverse range of cultures impact businesses
- want to know how to ensure a business has a healthy financial state.

Where will it take you?

- any role in the business world (e.g., business management, business administrator)
- finance/accountancy
- marketing
- social media manager.

Entry requirements:

Grade **5** or above in GCSE Business or a **Merit** or above in BTEC Business. Students who have not studied Business previously, a grade **5** in English, Mathematics or Science.



Chemistry

Choose Chemistry if you are interested in...

- how drugs work
- the future of energy production
- designing new materials
- discovering new medicines
- using chemical reactions to solve future problems.

Where will it take you?

- pharmacy
- medicine or dentistry
- engineering
- scientific research
- material design.

Entry requirements:

Grade **6 - 6** in Combined Science



Dance

Choose Dance if you are interested in...

- performance
- choreography
- dance analysis
- dance history
- American jazz dance
- American musicals such as *Singin' in the Rain*, *Cabaret*, *Sweet Charity*, and *West Side Story*
- contemporary dance (Rambert Dance)
- choreographers such as Christopher Bruce, Matthew Bourne, Richard Alston, Bob Fosse, and Jerome Robbins
- dance education.

Where will it take you?

- professional dancer/performer
- professional choreographer
- further education at top institutes
- owner of dance/theatre school
- secondary teacher of dance/performing arts
- primary education
- dance lecturer in higher education
- dance therapist.

Entry requirements:

Grade **5** or above in GCSE Dance or **Merit** in BTEC Performing Arts. Students will be considered on an individual basis if they have not studied Dance previously.

Drama and Theatre

Choose Drama and Theatre if you are interested in...

- performance
- directing
- study of a variety of styles of acting
- scripted performance
- devising performance
- sound design
- lighting design
- costume design
- live theatre analysis and evaluation.

Where will it take you?

- professional actor/performer
- directing
- playwriting
- technical designer
- secondary teacher of drama/performing arts
- further education at top institutes
- drama therapist
- owner of performing arts school.

Entry requirements:

Grade **5** or above in GCSE Drama or **Merit** in BTEC Performing Arts. Students will be considered on an individual basis if they have not studied Drama previously.



English Language

Choose English Language if you are interested in...

- how children acquire spoken and written language as well as learning to read
- the power of both the spoken and written word within society
- how language has changed over time to the language we know today
- how language is used differently by men and women
- the influence that modern technology has had, and continues to have, on language
- how we can use language differently in different scenarios.

Where will it take you?

- journalism
- law
- public relations
- education
- business.

Entry requirements:

Grade **5** or above in GCSE English Language and English Literature.

English Literature

Choose English Literature if you are interested in...

- exploring big questions about the human experience
- reading a wide variety of texts across a range of eras and genres
- reading critically and applying various literary theories
- investigating the relationship between texts and their social, historical, and literary contexts
- developing your own critical voice and analytical, academic writing style.

Where will it take you?

Any career requiring creative, analytical thinkers with excellent communication skills. For example:

- law
- journalism
- education
- creative writing
- publishing and public relations
- theatre and performance.

Entry requirements:

Grade **5** or above in GCSE English Language and English Literature.



Fine Art

Choose Fine Art if you are interested in...

- exploring a range of art and design processes and techniques
- exploring a context personal and relevant to you
- drawing and painting using a range of media
- exploring mixed media including collage, assemblage and textiles
- installation
- ceramics
- printmaking.

Where will it take you?

- art education
- art therapist
- printmaker
- gallery curator
- tattoo artist
- ceramicist
- textile artist or designer
- fashion designer.

Entry requirements:

Grade **4** or above in a GCSE art-based subject. Students who have not studied an art-based subject will be considered on an individual basis and will need to produce a portfolio of work.

French

Choose French if you are interested in...

- French-speaking artistic culture, including francophone music and cinema
- technological and social change, diversity, and the benefits they bring
- political engagement and who wields political power in the French-speaking world
- literary analysis and critique of French texts and film
- learning the language in the context of French-speaking countries and the issues and influences that have shaped them.

Where will it take you?

- translation/interpreting
- diplomacy and international relations
- education
- journalism
- marketing
- travel and tourism
- business.

Entry requirements:

Grade **6** or above in GCSE French.

Further Mathematics

Choose Further Mathematics if you are interested in...

- algorithm design and optimisation
- discovering imaginary numbers
- stability of structures
- graphing complex functions such as spirals
- three-dimensional geometry.

Many Russell Group universities require Further Mathematics A level to study for a mathematics degree.

Where will it take you?

- mathematician
- education
- engineering
- computer programming
- medicine and dentistry
- data analysis (e.g., in sports or actuarial careers)
- law, business, and finance.

Entry requirements:

Grade **7** or above in GCSE Mathematics.

Geography

Choose Geography if you are interested in...

- finding out about the many geographical issues facing us today and the impact that the decisions we make as a society have on the environment
- learning about different cultures and the various environments they live in
- how coastal landscapes are created and shaped
- the scientific processes that shape our world
- people and their societies, economies, cultures, and environments
- completing your own fieldwork and research study.

Where will it take you?

- local government
- travel and tourism
- journalism
- overseas development.

Entry requirements:

Grade **5** or above in GCSE Geography.

German

Choose German if you are interested in...

- gaining a command of German that enables you to speak and write on a wide range of topics
- grammatical structures and how the language works
- German-speaking society, including the role of the family, youth culture, and technological changes
- artistic culture, including festivals and the culture and history of Berlin
- multiculturalism, including migration and the EU
- German reunification
- studying a film and a book.

Where will it take you?

- translation/interpreting
- diplomacy and international relations
- education
- journalism
- marketing
- travel and tourism
- business.

Entry requirements:

Grade **6** or above in GCSE German.

Graphics

Choose Graphics if you are interested in...

- exploring visual communication
- infographics
- investigating contemporary graphic designers
- branding and product development
- developing design for print and packaging
- digital design using creative software
- image manipulation
- advertising
- multimedia
- interactive design
- illustration
- working towards a brief or specific target market.

Where will it take you?

- graphic designer
- web design
- advertising
- games designer
- product designer
- packaging designer
- app/website developer
- brand and logo design
- visual marketing and merchandising.

Entry requirements:

Grade **4** or above in a GCSE art-based subject. Students who have not studied an art-based subject will be considered on an individual

History

Choose History if you...

- are interested in understanding the events of the past and how they have been interpreted to shape and challenge your understanding of the modern world
- want to learn about English, European, and world history, specifically the Tudors and Weimar and Nazi Germany
- are interested in conducting your own research about the African American civil rights movement.

Where will it take you?

- law
- politics
- civil service
- psychology
- journalism
- historian
- marketing
- TV, radio, research
- teaching.

Entry requirements:

Grade **5** or above in History or a GCSE essay-based subject (English Language, English Literature, Religious Studies or Philosophy and Ethics).



Mathematics

Choose Mathematics if you are interested in...

- analysing information and making predictions
- working with data and spotting trends
- forces and motion of objects
- problem solving
- maths concepts underpinning science and many other areas.

Where will it take you?

- mathematician
- education
- engineering
- computer programming
- medicine and dentistry
- data analysis (e.g., in sports or actuarial careers)
- law, business, and finance.

Entry requirements:

Grade **7** or above in GCSE Mathematics.

Photography

Choose Photography if you are interested in...

- creating photographic images using a variety of digital techniques and processes
- experimental imagery
- multimedia
- responding to an issue, concept, or theme through the photographic image
- exploring a context personal and relevant to you
- documentary photography
- still life or landscape photography
- product photography
- fashion and portrait photography.

Where will it take you?

- commercial photographer
- photojournalist
- photo editor
- events photographer
- wedding photographer
- fashion photographer
- advertising photographer.

Entry requirements:

Grade **4** or above in a GCSE art-based subject. Students who have not studied an art-based subject will be considered on an individual basis and will need to produce a portfolio of work.

Physics

Choose Physics if you are interested in...

- what makes up the entire universe
- how maths can be applied to the world around us
- what would happen if you met your antimatter twin
- whether a source of electricity ever runs out of electrons.

Where will it take you?

- engineering
- medical physics
- patent attorney
- finance and accounting
- climate science and meteorology
- astronomy
- lasers and photonics
- robotics and AI.

Entry requirements:

Grade **6 - 6** in Combined Science

Politics

Choose Politics if you...

- are interested in how government decisions impacted our past and how they impact our present and future
- want to know about how governments work both at a local and a national level
- are interested in exploring where power lies in society and how this power is created
- want to explore who gets what in society and why.

Where will it take you?

- law
- modern foreign languages
- journalism
- local and national government.

Entry requirements:

Grade **5** or above in a GCSE essay-based subject (English Language, English Literature, History, Religious Studies, or Philosophy and Ethics).

Psychology

Choose Psychology if you...

- want to understand why humans act in certain ways
- want to draw insights into what influences behaviour
- are interested in the impact that everyday interactions have on human behaviour
- want to understand the science behind why people react in certain ways.

Where will it take you?

- counselling
- mental health work
- forensic psychology
- educational psychology
- nursing.

Entry requirements:

Grade **5** or above in GCSE English, Mathematics and Science.

Religious Studies

Choose Religious Studies: Buddhism, Philosophy and Ethics if you are interested in...

- who or what is God?
- why is there evil in the world?
- what is the right way to live?
- how far does Buddhism align with feminism in the modern world?
- what impact does religious experience have on how people live their lives?

Where will it take you?

- journalism
- law
- politics
- education
- consulting
- medicine.

Entry requirements:

Grade **5** or above in a GCSE essay-based subject (English Language, English Literature, History, Religious Studies, or Philosophy and Ethics).

Sociology

Choose Sociology if you...

- want to learn how society works
- are interested in what influences society and how it has changed
- enjoy thinking critically about issues and the different experiences that people have within society.

Where will it take you?

- criminology
- advertising and marketing
- civil service
- teaching
- local and national government.

Entry requirements:

Grade **5** or above in a GCSE essay-based subject (English Language, English Literature, History, Religious Studies, or Philosophy and Ethics).



Applied Science

Choose Applied Science if you are interested in...

- learning real-life applications of biology, chemistry, and physics
- developing technical skills to carry out practical investigations
- learning how science supports society.

Where will it take you?

- criminology
- nursing
- sports science
- physiotherapy.

Entry requirements:

Grade **4** or above in GCSE Science.



Computing

Choose BTEC Computing if you are interested in...

- how software can be developed
- the development of programs and games from the design, development, testing and distribution
- how we can help protect data from being intercepted by hackers and cyber attacks
- how data is transmitted to different devices and across the internet
- how each component within a computer functions.

Where will it take you?

- computer engineering
- software development specialist
- games design, production, and development
- network engineer
- artificial intelligence development.

Entry requirements:

Grade **5** or above in Computer Science or a **Merit** BTEC ICT

Health and Social Care

Choose Health and Social Care if you...

- want to learn how to build positive relationships in health and social care settings
- are interested in learning about equality, diversity, and rights in health and social care
- want to know about the anatomy and physiology of health and social care.

Where will it take you?

- early childhood studies
- nursing
- social work
- health care.

Entry requirements:

Merit in Child Development or Health and Social Care, or 5 GCSEs at grade **4** or above.

Music

Choose BTEC Music if you are interested in...

- performing
- composing original music
- listening to music of different genres
- working independently and/or as a member of an ensemble
- arranging music by other composers
- explaining how music is created
- the professional music industry.

Where will it take you?

- professional musician
- orchestrator
- composer
- sound technician
- backstage crew
- teacher
- music therapist.

Entry requirements:

Grade **5** or above in GCSE Music or **Merit** in BTEC Performing Arts. Students will be considered on an individual basis if they have not studied Music previously.



Sports Science

Choose Sports Science if you...

- want to learn how the body responds to physical activity
- are interested in sports coaching and organisation
- are interested in rehabilitation of injuries and sport psychology.

Where will it take you?

- physiotherapy
- sports coaching
- event management
- health and fitness.

Entry requirements:

Grade **4** or above in GCSE PE or **Merit** in Sports Science, or 5 GCSES at grade **4** or above.

Enrichment

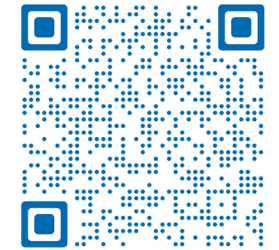
Enrichment opportunities...

Within the sixth form all students have the opportunity to experience a wide range of enrichment opportunities, both building on curriculum knowledge beyond the classroom such as outside speakers and practical fieldwork. In addition, the sixth form provides the opportunity to develop life skills. All students participate in St John's ambulance first aid, sign language and a range of optional activities such as VEX, Sports Leadership and EPQ qualifications. Lord Lawson sixth form look to build a community, inviting parents and carers to careers and UCAS events to support our students.



WHAT NEXT?

**Apply online
here:**

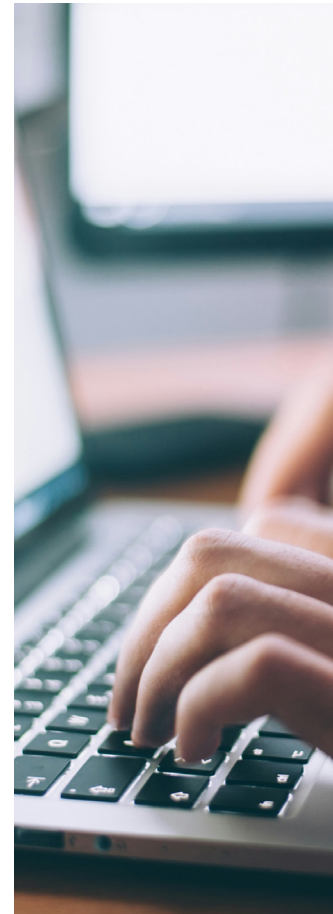


**We'll be in touch to arrange
an opportunity to discuss
your application.**

**We'll send you an offer for a
place at sixth form.**

**We'll invite you
to a taster event.**

**We'll see you on
Thursday 20 August 2026
to enrol.**



AT LORD LAWSON SIXTH FORM

WE GROW WE LEARN WE SUCCEED

TOGETHER.



**Lord Lawson
SIXTH FORM**

Birtley Lane, Birtley, County Durham, DH3 2LP

0191 433 4026

sixthform@lordlawson.academy

www.lordlawson.academy

