



Lord Lawson of Beamish Academy - Year 9 Curriculum Choices



We are a **'GOOD' SCHOOL'** in **ALL AREAS**
Inspection - November 2022

• Trust

• Respect

• Courage

• Ambition

Contents

Information

- 03 Foreword
- 04 Our Curriculum
- 05 Pathway 1a and 1b
- 06 Pathway 2

Core Subjects

- 07 English Language and English Literature
- 08 Mathematics
- 09 Physical Education (non-examined)
- 10 Religious Education (non-examined)
- 11 Science (Combined)
- 12 Science (Separate)

GSCE Subjects

- 13 3 Dimensional Design
- 14 Business Studies
- 15 Computer Science
- 16 Dance
- 17 Drama

- 18 Fine Art
- 19 French
- 20 Geography
- 21 German
- 22 Graphic Communication
- 23 History
- 24 Music
- 25 Photography
- 26 Physical Education
- 27 Religious Studies
- 28 Textile Design

Vocational Subjects

- 29 Business Enterprise
- 30 Child Development
- 31 Constructing the Built Environment
- 32 Digital Information Technology
- 33 Hospitality and Catering
- 34 Sports Science

Useful information websites

Sixth Form

For information about Sixth Form courses and entry requirements visit: <https://lordlawson.academy>

University

For information and options post school, college or sixth form: www.ucas.com

Employment

Advice and information on job profiles, skills and qualifications required: <https://nationalcareers.service.gov.uk>

Apprenticeships

Advice post 16 on options/guidance relating to apprenticeships: www.gov.uk/become-apprentice

Dear Students

Welcome to your curriculum choices booklet! In here you will find details of all the courses we offer in years 10 and 11 at Lord Lawson of Beamish Academy. I hope you will find courses that will interest and challenge you, and courses you will enjoy and be inspired by.

GCSEs and vocational subjects are different from subjects in years 7 to 9. For a start, you have some choices, including some new subjects. You have the possibility of choosing courses that are more practical and often assessed, in part, through coursework. There are also the more traditional academic subjects, where the exams are all at the end of the course.

I encourage you to read the information carefully on pages 4 to 6 about the different pathways and choices you can make. Then, read pages 7 to 35 for detailed information on each of the courses we offer. These will help you choose sensible options for you, based on your ability and your interests.

There are good reasons and – well, less good reasons that people use when they choose their options. Here are some of the good ones:

- I am interested in this subject, and I work hard, so I am usually successful
- I can see the value of this subject for my future
- I want to combine this subject with my other subjects, as they work well together

Your teachers, your form tutor and the year team are able to talk with you about your choices. Mrs Leigh, our Careers Coordinator, is also available; her office is at the back of the Year 10 base.

Please take time to read about the courses we offer, and ask questions of your parents and your teachers, so that you can make the choices that are best for you.

Best wishes,



Dr A T Fowler
Principal

Our Curriculum

At Lord Lawson of Beamish Academy our core purpose is to create a learning experience that is exciting and challenging; broad, balanced and relevant as well as accessible and fun. The options process has been designed to meet the needs of every student, offering the opportunity to experience, enjoy and succeed in a wide range of subjects.

There are different pathways for students. Students will be recommended a pathway based on their Key Stage 2 SAT results, individual progress and strengths they have demonstrated in their time at Lord Lawson. Within each pathway there is considerable choice. All pathways have core subjects that all students must study. These subjects are GCSE English language, GCSE English literature, GCSE Mathematics, GCSE Science (either separate sciences or combined sciences) and non-examined courses in physical education and religious education.

It is possible to study sciences as separate subjects (biology, chemistry, and physics) or combined together. Separate sciences are recommended for students currently in our upper band classes, but these students are also able to opt for combined sciences. There are merits to either route and both routes allow students to study biology, chemistry or physics at A level. Students who choose separate sciences have this third science as one of their GCSE choices, in order to give enough time to study each subject. This means they have two further choices to make.

Choosing separate sciences, along with other GCSE subjects such as history, geography or computer science, and a modern foreign language (French or German), offers an academic route – called the 'English Baccalaureate' – that offers stretch and challenge for our

students. Separate science students also study GCSE Religious Studies, which allows them to gain 9 GCSE qualifications, including an important grounding in philosophy, ethics and religion, which will be useful in later study and in the workplace.

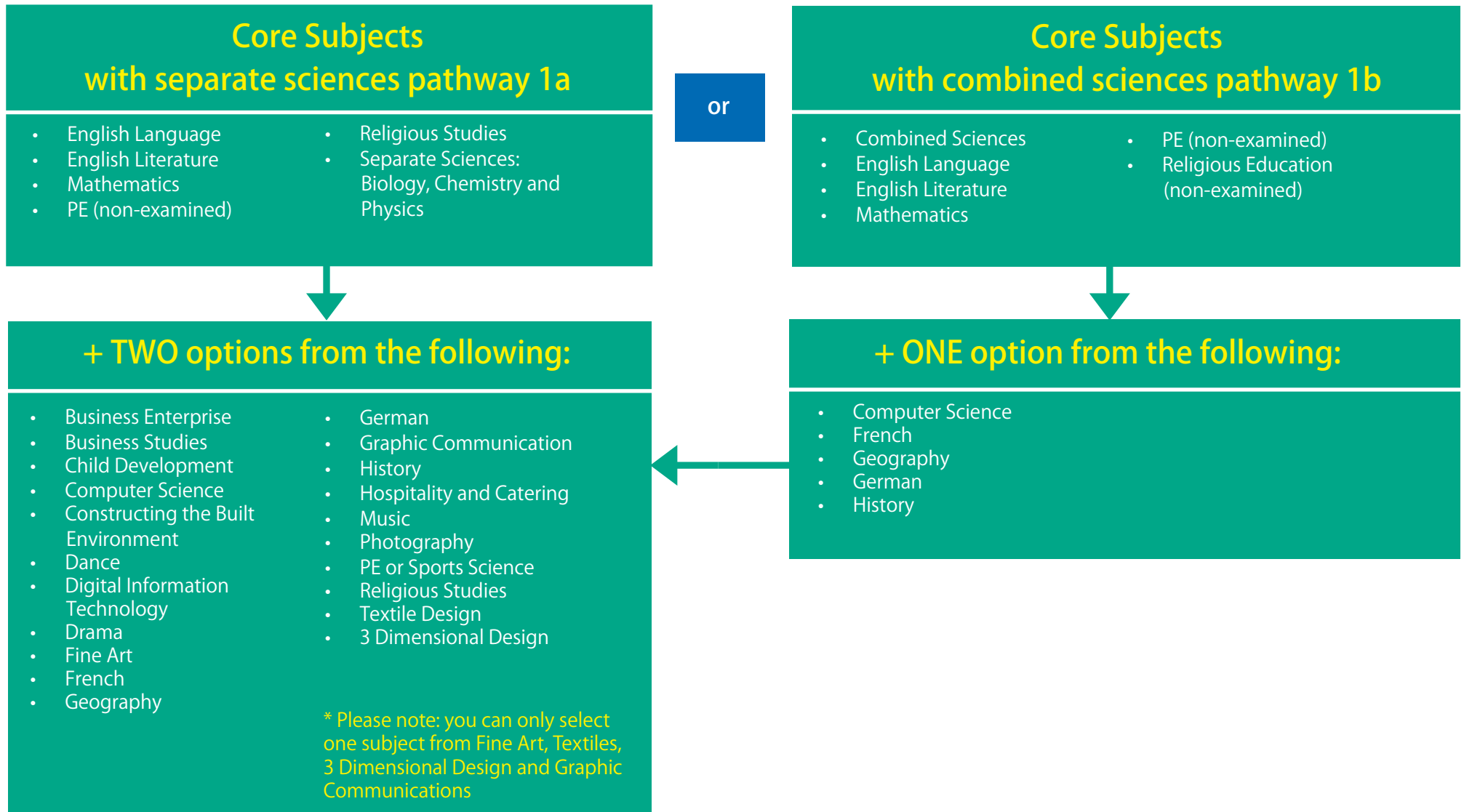
Students who choose the combined sciences, study all three sciences and gain two GCSEs in science. They have a slightly broader choice in their other subjects, because they can choose three additional subjects. These can be GCSEs or a mixture of GCSEs and more vocational subjects. Students on this pathway must select at least one of the following options: GCSE Computer Science, GCSE French, GCSE German, GCSE Geography or GCSE History.

Subjects have been organised within this booklet by the qualification that students achieve. The first section focuses on the subjects all students must study, the second section is a range of subjects that students will gain a GCSE qualification and the third section are subjects that are vocational. GCSE subjects are predominantly examined at the end of the course through a written exam. Please see the individual subject pages that detail the outline of courses. Vocational subjects go under different titles, such as BTEC, Cambridge National, and WJEC Level 2 Technical Award. These qualifications all have a greater proportion of practical work than many GCSEs, and more than half of the work is assessed through coursework. This method of study and assessment suits many students, particularly those who struggle with examinations. Vocational subjects may lead more directly to jobs and apprenticeships.

Students will be supported through the options process by tutors, teaching staff and senior leaders.

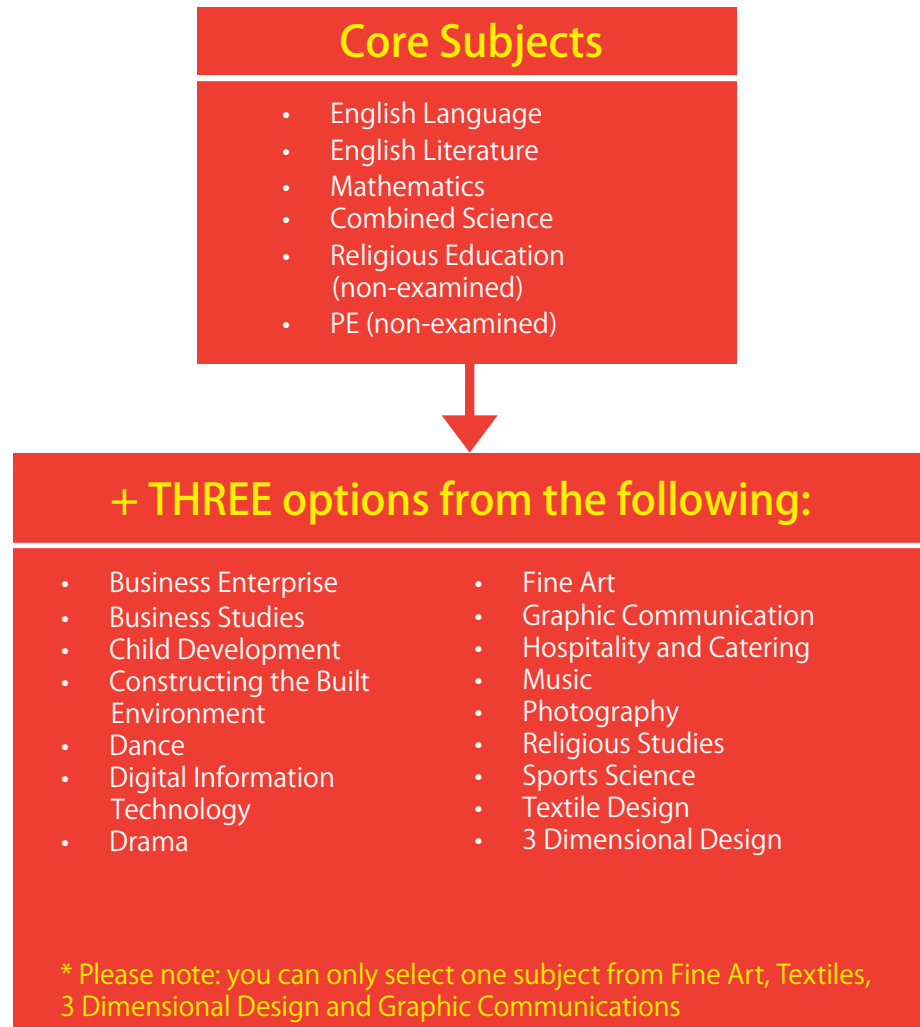
Pathway 1a and 1b

Students will be able to choose from one of the following pathways depending on their choice of science options:



Pathway 2

If you are directed onto pathway 2 there is no requirement to take GCSE Computer Science or GCSE French or GCSE Geography or GCSE German or GCSE History. If you wish to choose one of these subjects as an option you will need to talk to the member of staff in your interview. A very small number of students will be directed toward this pathway. You will be informed in February if you are directed toward this pathway.



What will I learn?

GCSE English Language:

You will read a wide range of texts from the 19th, 20th and 21st centuries, including literature and literary non-fiction as well as other writing such as reviews and journalism. You will develop critical skills, summarise and compare texts, as well as evaluating a point of view.

You will also develop your own writing skills, learning to present your own viewpoint and write descriptive and narrative texts.

GCSE English Literature:

You will study a range of texts including a Shakespeare play, a modern play, and a nineteenth century novel, as well as power and conflict poetry.

You will be expected to read widely and appreciate the depth and power of the English literary heritage, using some appropriate terminology to analyse how writers present their ideas.



How will I be assessed?

Both GCSE English Language and GCSE English Literature are assessed through external exams. GCSE English Language involves the study of fiction, literary non-fiction and non-fiction texts that students are expected to analyse and produce within the exam.

In GCSE English Literature students are examined on a nineteenth century novel, a Shakespeare play, a modern drama text, an anthology of poetry and some unseen poetry.

What qualification will I gain?

GCSE English Language and GCSE English Literature. You will also receive a separate endorsement of your speaking and listening skills in the form of a certificate.

Where will it take me?

Whatever your future plans, a qualification in English is a necessity. Students who demonstrate consistent effort; a willingness to explore their own thoughts, feelings and ideas; an ability to work collaboratively in a group and a desire to improve the quality of work, will be students that succeed in this subject.

There are many career opportunities available to you with a qualification in English. For example: journalism, teaching, recruitment, advertising and medicine.

For further information contact

cbeck@lordlawson.academy
Ms Beck - Associate Senior Leader

frobinson1@lordlawson.academy
Mrs Robinson-Dodd - Deputy Subject Leader

What will I learn?

The course covers a range of topics such as: number, algebra, ratio (proportion and rates of change), geometry and measures, probability, and statistics.

Mathematics is a fantastic, fun and exciting subject where we consider questions such as:

- Do statistics lie?
- How many legs does the average dog have?

- What kind of chart can you eat?
- Why do we use letters in maths?
- How can a number behave irrationally?
- What is the last digit of the number pi?

How will I be assessed?

At the end of year 11 and the five year course, you will sit three exams. GCSE Mathematics has a foundation tier: (Grades 1 – 5) and a higher-tier (Grades 4 – 9).

Students must take three question papers at the same tier. Each paper is worth 100 marks and lasts 1 hour and 30 minutes. A calculator can be used for paper 1 and 3 at foundation level and 4 and 6 at higher level.

What qualification will I gain?

GCSE Mathematics

Where will it take me?

What types of skills do employers look for? Problem solving, analysis, data handling and communication skills, to name just a few. These transferable skills are useful in any job, and you can get all of them from studying maths.

There are many career opportunities available to you with a qualification in maths. Some obvious but there are others that you may not have thought of, such as: computer game designer and ICT, medical statistician and medical research, audio software engineer and digital signal processing, meteorologist and climate prediction, racing car designer and aerodynamics, avalanche researcher and fluid dynamics, statistical consultant and data analysis; the list goes on.

But this shows you don't need to be called a mathematician to use maths. In fact, no matter what job you go into, you will use your mathematical skills.

For further information contact

djackson@lordlawson.academy
Mrs Jackson - Associate Senior Leader



What will I learn?

You will be given the opportunity to succeed and excel in competitive sport and other physically-demanding activities. We will provide opportunities for you to become physically confident in a way which supports your health and fitness. Opportunities to compete in sport and other activities will help you build character and help you to embed values such as fairness and respect.

At Key Stage 4 you will tackle complex and demanding physical activities.

You will be taught to:

- Use and develop a variety of tactics and strategies to overcome opponents in team and individual games. Sports include badminton, basketball, cricket, football, hockey, netball, rounders, rugby and tennis
- Develop your technique and improve your performance in other competitive sports, e.g. athletics or other physical activities
- Evaluate your performances compared to previous ones and demonstrate improvement across a range of physical activities to achieve their personal best
- Continue to take part regularly in competitive sports and activities outside school through community links and sports clubs.

For further information contact

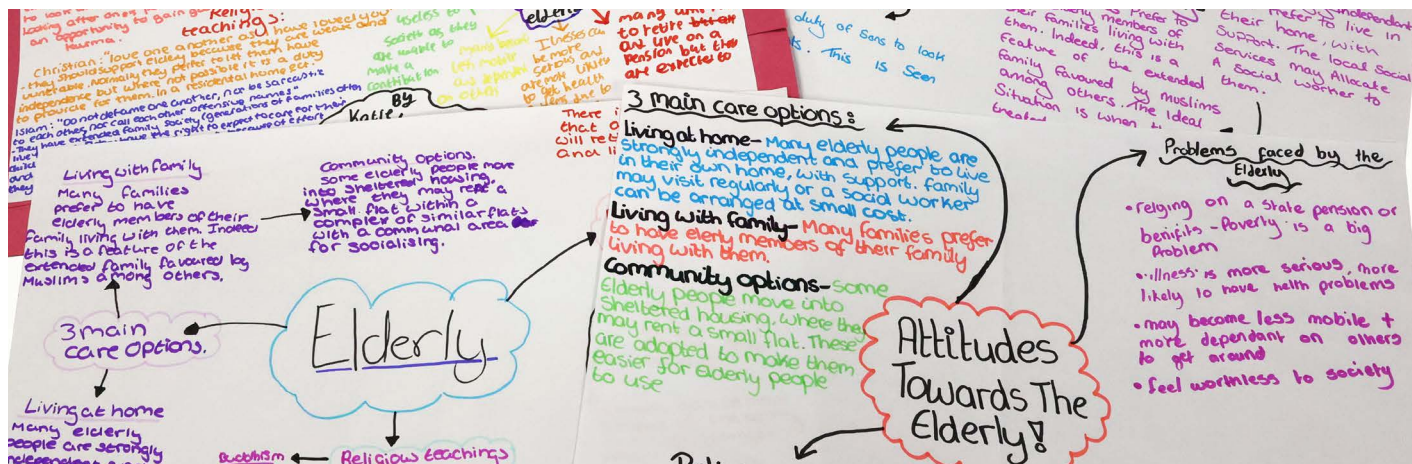
dwyllie@lordlawson.academy
Mr Wyllie - Subject Leader

Where will it take me?

Our curriculum for core physical education at Key Stage 4 will aim to ensure that you:

- Develop competence to excel in a broad range of physical activities
- Are physically active for sustained periods of time
- Engage in competitive sports and activities
- Acquire knowledge so that you can lead a healthy, active life.





How will it help me?

and the way people behave towards one another. Some of these beliefs may be deeply held and can cause discussions to be lively and frequent. However, this is needed to help students to come to terms with important issues and encourage a greater tolerance and acceptance of other people's views. Just like in history and geography, religious education students examine various examples of evidence and use them to construct arguments, and to test their own views. In this way, religious education is also great training in clear thinking and expressing one's self and therefore complements the study of science.

Our academy, incidentally, is named after a politician who worked hard to improve the lives of others and champion equality in the region. This is yet another reason why core religious education is an important part of our curriculum and is delivered in a holistic, inclusive manner with a focus on ethics.

What will I learn?

We offer two different courses in religious education for KS4. We have a GCSE full course in religious studies, and a course in religious education that is not examined, referred to as core religious education. All students study core religious education fortnightly, other than some of the students who choose to study the GCSE course in religious studies or follow the GCSE as a complementary addition to their separate science study.

Every student has (by law) to study religious education. This is a legal rule for all students up to the age of 18. Having said that, religious education is also an interesting and valuable subject in its own right. It sits well alongside many other subject choices, because although the main basis of religious education and religious studies is to

understand basic beliefs of the world's six major religions, it actually goes far beyond this. Studies in religion help students debate questions about who they are, where they come from and what they believe. They also allow students the opportunity to be faced with and think about the views and beliefs of others. These views and beliefs may well be very different from our own, but it is important to maintain a dialogue and a mutual respect for all of our differences.

How will it help me?

Core religious education lessons involve discussing ethical issues including life, death

For further information contact

jadairmcauley@lordlawson.academy
Ms Adair – Subject Leader

What will I learn?

Everyday life has many questions that science can help us answer as well as many solutions to problems that allow humanity to thrive. This course is designed to develop a curiosity about the natural world and give an insight into how science works.

The combined science course covers the three science disciplines, biology, chemistry, and physics. It will provide you with a deep understanding of the science required to allow you to make informed decisions on scientific issues as well as progression to science courses post-16.

Life and Environmental Sciences

This side of the course covers atoms to cells, states of matter, plants and photosynthesis, the human body, infection and disease, lifestyle and health, as well as a range of environmental topics included the earth's atmosphere and biodiversity.

Physical Sciences

In the physical sciences students will learn about a range of topics including forces and energy, electricity and the future energy issues, atoms, ions and the extraction of metals we use everyday as well as acids, alkalis and chemical changes.

How will I be assessed?

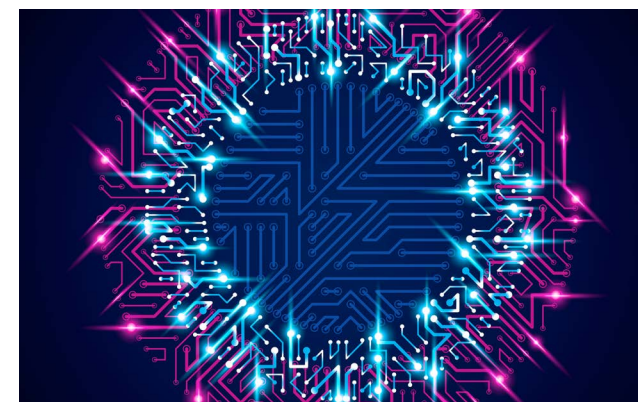
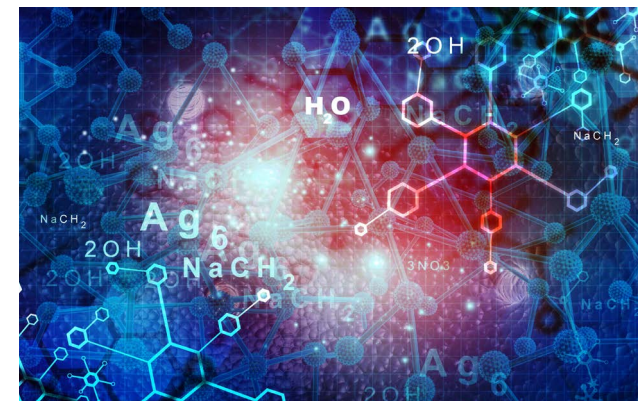
Combined science students will take four science exams at the end of Year 11. There are two exams from life and environmental Science and two from physical science. Each paper is 100 marks and lasts 1 hour 45 minutes. Each paper is worth 25% of the final GCSE award, in which students receive two GCSE grades.

Where will it take me?

Students who enjoyed studying GCSE Science have gone on to study A Level Chemistry, Physics or Biology. You can also study a science related course post-16 such as engineering. If post-16 science is not for you, employers will value the GCSE qualification as it encourages both academic and practical skills. GCSE Combined Science gives you the opportunity to seek future careers in the NHS (the largest employer in Europe), engineering, marine biology, chemistry and pharmacology.

What qualification will I gain?

Two GCSEs in science



For further information contact

pboxall@lordlawson.academy
Mr Boxall - Associate Senior Leader

Please see page 12 for a list of all other contacts

What will I learn?

The separate science option is suited to highly motivated students who wish to extend their scientific knowledge and understanding to support further scientific study. Students should also have a relatively strong mathematical ability in order to access the increased mathematical content assessed in the final exam.

If students choose separate science as one of their options they will take the three GCSEs in biology, chemistry and physics. They will not take the GCSE Combined Science course. Students will also take GCSE Religious Studies when taking GCSE Separate Sciences; please see page 32 for more details on this course.

GCSE Biology

Paper 1 Biology: Cell Biology; Organisation; Infection and Response and Bioenergetics
Paper 2: Homeostasis and Response; Inheritance, Variation and Evolution and Ecology.

GCSE Chemistry

Paper 1: Atomic Structure and the Periodic Table; Bonding, Structure, and the Properties of Matter; Quantitative Chemistry; Chemical Changes and Energy changes.

Paper 2: The Rate and Extent of Chemical Change; Organic Chemistry; Chemical Analysis; Chemistry of the Atmosphere and Using Resources.

GCSE Physics

Paper 1: Energy, Electricity, Particle Model of Matter, Atomic Structure, Radioactivity
Paper 2: Forces, Waves, Pressure, Light, Magnetism and Electromagnetism, Space Physics

How will I be assessed?

Students taking separate science GCSE will take six exams, two in each science subject. Each exam is 1 hour 45 minutes long and 100 marks are available. Students are awarded three science GCSE grades, one for each science subject.

What qualification will I gain?

GCSE Biology, GCSE Chemistry and GCSE Physics

Where will it take me?

Studying separate science is ideal for those students who plan to go on to study A Level

Chemistry, Physics or Biology. Many students may wish to take separate sciences if they are interested in science-based careers such as medicine, dentistry or veterinary science as well as engineering. GCSE Separate Sciences are relevant to an enormous range of future jobs and careers. Employers and universities will value the knowledge and skills you will develop on this course.



For further information contact

pboxall@lordlawson.academy

Mr Boxall - Associate Senior Leader

ecraig@lordlawson.academy

Miss Craig - Head of Biology

sfalconer@lordlawson.academy

Miss Falconer - Head of Chemistry

jfrater@lordlawson.academy

Miss Frater - Head of Physics

* Students can opt for GCSE Separate Sciences; however, all students will be considered on an individual basis to ensure they follow the most suitable course. Students should not opt for separate sciences without first having a discussion with Mr Boxall.



What will I learn?

This is a challenging course that covers a wide range of 3D designing and making principles, including a range of design and making processes, techniques and equipment. Students may cover areas such as architectural design, product design, environmental design or sculpture. Students will use 3D techniques and processes such as model making, construction, and assembling using CAD modelling with specialist software such as 2D design and Google sketch up, CAM machinery such as the laser cutter, hand drawn design work, hand-made 3D models, workshop tools, equipment and machines.

Over the two years, you will produce two large portfolio projects coursework projects inspired by a variety of themes, and the course will culminate in an externally set assignment with a 10 hour examination. This qualification is an excellent

grounding for A level 3D Design and other art and design disciplines such as graphics and fine art.

How will I be assessed?

Assessment is through a portfolio of work undertaken during the course of study (60%) and an externally set task (40%) in which you will create a personal response to one of the questions issued by the examination board. This includes a 10 hour controlled test period.

What qualification will I gain?

GCSE 3 Dimensional Design.

Where will it take me?

GCSE 3D Design is an excellent grounding for the A level 3D course and other art and design related qualifications. The creative industry is vast and 3D design offers pathways into product design, architectural design, environmental design, industrial design and engineering.

For further information contact

ymurray@lordlawson.academy
Miss Murray - Subject Leader



What will I learn?

You will study the different types of businesses, from small corner shops to powerful multinationals; how businesses grow; why people are the most important resource a business has; who helps but also controls business activity and what happens to businesses when 'things change'.

You will learn how to describe business situations, analyse problems, evaluate the evidence and communicate clearly your arguments using business terms. You will regularly use ICT to carry out classroom tasks and study real businesses. You will also learn about the following areas of business:

- Business activity
- Marketing
- People
- Operations
- Finance
- Influences on business
- The independent nature of business

How will I be assessed?

You will have two exam papers, both of which contribute 50% to your total GCSE grade.

What qualification will I gain?

GCSE Business Studies

Where will it take me?

You can continue to study business studies at A level in the sixth form and university. In terms of future job prospects Business Studies will take you to pathways such as:

- Accountancy
- Business management
- Business and analytics
- Business and HR management
- Business and marketing
- Business and supply chain management
- Economics and finance
- Finance and investment management
- Global business management
- International banking and finance
- International tourism and hospitality management
- Tourism and events management



For further information contact

vness@lordlawson.academy
Miss Ness - Subject Leader

cwhite@lordlawson.academy
Mr White - Subject Teacher

* Students can opt for either GCSE or Vocational Business; however, the final decision for which course they will follow will be made by the department to ensure they follow the most suitable course.

What will I learn?

You will study the following three units:

Unit 1: Computer Systems

You will learn about: the central processing unit (CPU), computer memory and storage, data representation, wired and wireless networks, network topologies, system security and system software. You will also learn about ethical, legal, cultural and environmental concerns associated with computer science.

Unit 2: Computational Thinking, Algorithms and Programming

You will apply knowledge and understanding gained in unit 1. You will develop skills and understanding of computational thinking: algorithms, programming techniques, producing robust programs, computational logic and translators.

Practical Programming

You will be given the opportunity to undertake programming tasks which will allow you to develop skills to design, write, and test and refine programs using a high-level programming language. You will be assessed on these skills during the written examinations, in unit 2.

You will learn about critical thinking, analysis and problem solving. The computer systems and programming unit will teach you the theory regarding hardware, software, the representation of data in computer systems, databases, computer communications, networking and programming.

You will gain valuable thinking and programming skills which are extremely attractive to employers. You will also gain an understanding of problem solving and gain experience in creating logical and efficient solutions. We aim to help you develop these skills in a fun and interesting way which you can then transfer to other subjects and apply in day-to-day life.

How will I be assessed?

This course is assessed by two written exam papers:

1. Computer systems (50% of the total marks).
The question paper will consist of short and medium answer questions. There will also be one 8-mark extended response question.

2. Computational Thinking, Algorithms and Programming (50% of the total)

Section A: (50 marks).
This will assess your knowledge and understanding of concepts of computer science. You will then apply these to problems in computational terms, where you may use an algorithmic approach.

Section B: (30 Marks).
This will assess your practical programming skills and your ability to design, write, test and refine programs. The question paper will consist of short and medium answer questions.

What qualification will I gain?

GCSE Computer Science

Where will it take me?

If you take this course, you could go on to study the subject at A level or at university and you will have an advantage over fellow students who are picking up the subject at these higher levels. The increasing importance of ICT means there will be a growing demand for professionals who are qualified in this field.

The course is also excellent preparation for study or work in areas that rely on the skills you will develop such as engineering, financial and resource management, science and medicine.

For further information contact

rmordey@lordlawson.academy
Mr Mordey - Subject Leader

What will I learn?

GCSE Dance is suited to you if you are interested in developing your knowledge of dance and your experience of performance and choreography. You will develop your understanding of dance history, choreographers and set professional works as well as perform in group dances and create your own choreography.

Studying GCSE Dance will also provide you with the opportunities and experiences to develop your communication skills, collaborative skills and self-confidence. Students with a range of dance experience would benefit from the course.

You will work closely with a small class of like-minded creative students who love to dance and explore topics and issues through choreography.

It will also provide you with the enjoyment of studying a creative and practical based course in school.

How will I be assessed?

There are two course components:

Component 1- Performance and Choreography

60% of overall GCSE grade.



How will I be assessed?

Performance:

30% of GCSE grade
40 marks (15 marks for set phrases and 25 marks for duet/trio performance)

Choreography:

30% of GCSE
40 marks

The practical unit is internally marked and externally moderated.

Component 2- Dance Appreciation

40% of overall GCSE grade
Written Paper - 1 hour 30 minutes
80 marks

What qualification will I gain?

GCSE Dance

Where will it take me?

If you have a passion and interest in the subject, you will be successful on this course. Studying GCSE Dance will support you in accessing further dance training leading to a career within the dance Industry.

For further information contact

sbrown@lordlawson.academy
Miss Brown - Subject Leader

What will I learn?

The course is specifically designed for students who have a genuine interest in drama and the theatre. You will be encouraged to develop your creative skills, self confidence, self discipline and communication skills.

What will I learn about?

The course consists of both practical work and a final written examination. You will learn about different genre and performance styles and the ways in which performers and designers communicate meaning to an audience. You will take part in practical workshops to improve your personal acting skills and perform one script and one devised piece for formal assessment.

**How will I be assessed?****Component 1: Understanding drama**

This unit requires knowledge and understanding of drama and theatre. You will study one set play and complete analysis and evaluation of the work of a live theatre maker.

How it is assessed:

Study of one set text and live theatre; open book exam – 1 hour 45 minutes

- Section A: multiple choice (4 marks)
- Section B: four questions on a given extract from the set play (46 marks)
- Section C: one two part question (from a choice) on the work of theatre makers in a single live theatre production (30 marks)

Component 2: Devising drama (practical)

Process of creating and performance of devised drama. Analysis and evaluation of own work.

How it is assessed:

- Devising log (60 marks)
- Devised performance (20 marks)

Component 3: Texts in practice (practical)

Performance of two extracts from one play, specific focus on the characterisation or design skills.

How it is assessed

- Performance of Extract 1 (20 marks) and Extract 2 (20 marks)

What qualification will I gain?

GCSE Drama

Where will it take me?

This qualification can lead to A level Drama and Theatre which in turn can be used to access a range of degree courses ranging from performance studies to dramaturgy.

For further information contact

sbrown@lordlawson.academy
Miss Brown - Subject Leader

jrace@lordlawson.academy
Miss Race - Subject Teacher

What will I learn?

This art qualification is an exciting and challenging course that covers a wide range of art and design disciplines such as painting, drawing, sculpture, ceramics and printmaking, as well as embracing new technologies such as photography and computer aided design.

Over the two years, you will produce two to three large coursework projects inspired by a variety of themes, and the course will culminate in an externally set assignment with a ten hour examination.

This qualification is an excellent grounding for all A level art and design courses offered in the sixth form and is an essential subject for those wishing to progress into careers in art and design. This will be well suited to students who wish to cover a more varied and general art based skill set.



How will I be assessed?

Assessment is by an examination of a portfolio of work undertaken during the course of study (60%) and an externally set task (40%) in which you will create a personal response to one of the questions issued by the examination board.

This includes a 10 hour controlled test period.

What qualification will I gain?

GCSE Fine Art

Where will it take me?

GCSE Fine Art is an excellent grounding for A level courses and art and design related degrees.

The creative industry is thriving, and art and design offers pathways into design, fashion, textiles, graphic and product design, fine art, architecture, advertising, games design and gallery work.

For further information contact

ymurray@lordlawson.academy
Miss Murray - Subject Leader

What will I learn?

GCSE French focuses on communication with French speakers in France, Belgium or anywhere you may need to speak or understand French. A good GCSE in French will give you the competence to discuss and describe issues in a variety of contexts which relate to your own experience. Everything you have been learning since the start of Year 7 is language you will use at GCSE level. You have already started some topics; others will be new. The language content covers three broad themes:

Theme 1: People and lifestyle. This covers the topics of identity and relationships with others; healthy living and lifestyle; education and work

Theme 2: Popular culture. This covers the topics of free-time activities and customs; festivals and celebrations; celebrity culture

Theme 3: Communication and the world around us. This covers the topics of travel and tourism, including places of interest; media and technology; the environment and where people live

Through these topics you will develop your skills and ability to communicate via speaking and writing, as well as how to identify key details in texts you hear and read.

How will I be assessed?

Each skill will be assessed separately in exams at the end of the course: Listening (25%), Reading (25%), Speaking (25%), Writing (25%). Students enter the exam at either higher or foundation tier.

What qualification will I gain?

GCSE French



Where will it take me?

A GCSE in French will enable you to deal with a variety of situations in a French speaking country, which in an increasingly multilingual world will give you an advantage in the world of work. In addition, you will gain invaluable language learning skills to apply to learning any second foreign language later in life. Learning one language will serve as an excellent base for learning a second more quickly.

For further information contact

jcross@lordlawson.academy

Ms Cross - Subject Leader, Modern Languages

What will I learn?

Unit 1: Physical geography

The challenge of natural hazards: Where are volcanoes and earthquakes most likely to be found? How do tropical storms form and how much damage can they do? Why is UK weather becoming more extreme? Does climate change exist? What can be done about it in the world?

The living world: What is an ecosystem? Where do we find tropical rainforests and why are they being cut down? What impact does the Amazon Rainforest have on the world? How important are places like Antarctica to the planet? How can humans use cold environments as opportunities for development? Should we?

Physical landscapes in the UK: How do rivers help to shape our land? What can be done to help prevent flooding? How has our coastline been shaped and how will it continue to change? How can we protect our coastlines from the threat of rising sea levels and coastal erosion?

Unit 2: Human geography

Urban issues and challenges: Why are cities in poor countries growing so rapidly? What problems exist in cities around the world? How important are UK cities in the world? How can cities become more sustainable and eco-friendly?



The changing economic world:

How can we measure development in the world? How can the population, or even tourism, affect development in a country? Does aid actually help countries to develop? Or does big business help? What can we do to improve the UK's economy? Is the UK still important in the world?

The challenge of resource management:

How are food, water and energy distributed around the world? Where in the world has a secure or insecure energy supply? What can we do to increase energy supplies? What is fracking all about? How can we develop energy in a sustainable and environmentally-friendly way?

Unit 3 : Geographical applications

Involves field trips that are organised so that you can see these processes in real life and collect data relating to them. You will evaluate real life events and understand solutions to local, national and global problems by using many geographical skills, such as map work, statistics, computer and graphical skills.

You will undertake one aspect of human geography fieldwork and one aspect of physical geography fieldwork.

How will I be assessed?

There will be three exams at the end of year 11:

- Physical geography (35%)
- Human geography (35%)
- Geographical skills (30%)

What qualification will I gain?

GCSE Geography

Where will it take me?

Geography will enable you to fully understand what is happening to our planet and what we need to do to make sure that we treat it well enough so that it is here for a long time yet. You will learn a range of skills that will prepare you for so much in the world and for further study. For example research, analysis, statistical, cartographic and report-writing will all prepare you for A levels and the working world.

For further information contact

msurtees@lordlawson.academy

Mr Surtees - Subject Leader

What will I learn?

GCSE German focuses on communication with German speakers in Germany, Austria or anywhere you may need to speak or understand German. A good GCSE in German will give you the competence to discuss and describe issues in a variety of contexts which relate to your own experience. Everything you have been learning since the start of Year 7 is language you will use at GCSE level. You have already started some topics; others will be new. The language content covers three broad themes:

Theme 1: People and lifestyle. This covers the topics of identity and relationships with others; healthy living and lifestyle; education and work

Theme 2: Popular culture. This covers the topics of free-time activities and customs; festivals and celebrations; celebrity culture

Theme 3: Communication and the world around us. This covers the topics of travel and tourism, including places of interest; media and technology; the environment and where people live

Through these topics you will develop your skills and ability to communicate via speaking and writing, as well as how to identify key details in texts you hear and read.

How will I be assessed?

Each skill will be assessed separately in exams at the end of the course: Listening (25%), Reading (25%), Speaking (25%), Writing (25%). Students enter the exam at either higher or foundation tier.

What qualification will I gain?

GCSE German



Where will it take me?

A GCSE in German will enable you to deal with a variety of situations in a German speaking country, which in an increasingly multilingual world will give you an advantage in the world of work. In addition, you will gain invaluable language learning skills to apply to learning any second foreign language later in life. Learning one language will serve as an excellent base for learning a second more quickly.

For further information contact

jcross@lordlawson.academy

Ms Cross - Subject Leader, Modern Languages



What will I learn?

This is an art qualification that specialises in graphic design techniques. It is an exciting and challenging course, which covers all aspects of graphic design. Areas of study include packaging design; DVD, CD and games cover design; and advertising and promotion.

You will have the opportunity to use up-to-date industry software such as Photoshop as well as learning the more traditional aspects of graphic design.

Through a practical controlled test you will have the opportunity to work on some exciting new project briefs, all of which are heavily linked with the art and design industries.

How will I be assessed?

Assessment is by an examination of a portfolio of work undertaken during the course of study (60%) and an externally set task (40%) in which you will create a personal response to one of the questions issued by the examination board. This includes a 10 hour controlled test period.

What qualification will I gain?

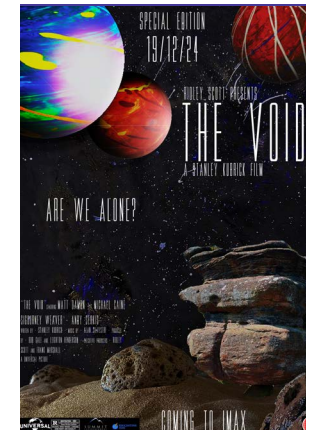
GCSE Graphic Communication

Where will it take me?

It is an excellent foundation for graphic and media related courses in the sixth form and beyond. There are many opportunities in the creative field and this course will give you real insight into the types of careers you could have if you studied this subject. It provides a wide range of career pathways into graphic design, game design, advertising, product design and many more.

For further information contact

ymurray@lordlawson.academy
Miss Murray - Subject Leader



What will I learn?

This is a GCSE with a very diverse set of topics on offer. It is split into a period study, a thematic study, a wider world depth study and a British depth study. You will look at America in the period 1920 - 1973, as the USA emerged as the most powerful and influential country in the world. You will study the theme of power in Britain over a thousand years, covering the Magna Carta, the civil war and modern democracy with votes for men and women. Your wider world depth study will look at the causes of WWII, while your British depth study will focus on the Norman invasion of England.

The North East has a big role in this part of history - it took a lot of castles and a lot of harrying to get us northerners to accept Norman rule - and so this unit should help you to understand your local environment.

As part of your studies you will take part in visits to local historical sites. You may also get the opportunity to take part in one of the history department's overseas visits, for example to Berlin to aid your understanding of Nazi Germany and Hitler's role in causing WWII.

How will I be assessed?

GCSE History is assessed in two exams. These are taken at the end of year 11. Each exam lasts 2 hours.

You will practise exam questions throughout the two years of GCSE History so that you are fully prepared.

The units will be split into the following papers:

Paper 1:

Conflict and tension 1918 - 1939
America, 1920 - 1973: Opportunity and inequality

Paper 2:

Britain: Power and the people
Norman England, c1066 - c1100

What qualification will I gain?

GCSE History

Where will it take me?

As well as being interesting, history is relevant to events happening in the world today. By studying history, you will understand how people are motivated and how the world today has been shaped by past events.

Where will it take me?

History skills are valuable to both further study at A level and employers. Evaluating evidence, thinking about bias and propaganda as well as constructing your own well written arguments, are sophisticated skills. History is great for jobs in journalism and law as well as many other careers.



For further information contact

atahir@lordlawson.academy
Mrs Tahir - Subject Leader

What will I learn?

GCSE Music gives a thorough understanding of music from three different perspectives: performance, composition and listening/appraising. If you have a passion for and interest in music you will be really successful on this course. It will provide you with the opportunity to study a creative and practical based course with a group of like-minded creative students who love to perform and write their own music.

All students must perform as a member of an ensemble. There are also opportunities to perform as a soloist if you desire; however, this is not compulsory. Nonetheless, it is vital that you feel comfortable performing to the class and performance to an audience is encouraged to develop confidence.

The course also incorporates compositional techniques culminating in large scale compositions to be submitted as coursework. A real musical focus on a variety of set works allows you to develop your listening skills and analysis through an in-depth understanding of different musical styles genres.

How will I be assessed?

Non-examined Assessment:

30% Performing

You will perform and record a minimum of two pieces, one of which must be an ensemble/group piece. All your recordings, lasting 4 – 6 minutes in total, will be sent off to the exam board to be moderated.

30% Composing

You will create two pieces of music lasting 4 minutes. One will be a free choice and the other will be in response to a brief set by the exam board. These pieces will be sent to the exam board for moderation.

Written Examination

40% Listening and appraising

This is a 1 hour 30 minute exam with a mixture of short and longer style questions. The questions are based around 2 set works (Africa by the band Toto and Badinerie by J.S. Bach) that you will study throughout year 10 and 11, as well as some unfamiliar listening pieces that you haven't studied.

What qualification will I gain?

GCSE Music

Where will it take me?

GCSE Music allows you to progress to study music further. There are many career opportunities in the music industry. For example: performer, teacher, songwriter, conductor, recording engineer or music publisher.



For further information contact

rhall@lordlawson.academy

Mrs Hall - Assistant Subject Leader

What will I learn?

The course encourages a creative approach to photography, offering an opportunity for artistic expression which does not rely on drawing and painting ability. You will use digital cameras to explore themes such as portraiture, landscape, documentary and movement.

You will learn how to compose, combine and manipulate images. Critical studies are an essential part of the course and you will be expected to undertake detailed, written case studies on the work of relevant photographers. To be successful on this course, you need to be flexible, committed, determined, creative and imaginative. The course may involve visits to galleries and museums as well as the opportunity to take part in workshops and work on location.

How will I be assessed?

Assessment is through a portfolio of work undertaken during the course of study (60%) and an externally set task (40%) in which you will create a personal response to one of the questions issued by the exam board. This includes a 10 hour controlled test period.

What qualification will I gain?

GCSE Photography

For further information contact

ymurray@lordlawson.academy
Miss Murray - Subject Leader

Where will it take me?

GCSE Photography is an excellent grounding for A level Photography and media related courses. It is a creative subject which lends itself well to a wide range of media and photography based careers.

It is an excellent foundation for many career pathways such as journalism, advertising, web design and graphics.



What will I learn?

The course comprises of both practical (40%) and theory (60%). There are two theory units:

Unit 1: Human body and movement in physical activity and sport

Applied anatomy and physiology

You will develop knowledge and understanding of the key body systems and how they impact on health, fitness and performance in physical activity and sport.

Movement analysis

You will develop knowledge and understanding of the basic principles of movement and their effect on performance in physical activity and sport.

Physical training

You will develop knowledge and understanding of the principles of training and different training methods in order to plan, carry out, monitor and evaluate personal exercise and training programmes.

Use of data

You will develop knowledge and understanding of data analysis in relation to key areas of physical activity and sport.

Unit 2: Socio-cultural influences and wellbeing in physical activity and sport

Sport psychology

You will develop knowledge and understanding of the psychological factors that can affect performers in physical activity and sport.

Socio-cultural influences

You will develop knowledge and understanding of the socio-cultural factors that impact on physical activity and sport, and the impact of sport on society.

Health, fitness and wellbeing

You will develop knowledge and understanding of the benefits of participating in physical activity and sport for health, fitness and wellbeing.

How will I be assessed?

Examination (60%)

Two exams each lasting 1 hour 30 minutes and each worth 30% of the total. Both exams are a mixture of multi-choice, objective test questions, short answer questions and extended answers questions.

Non-examined assessment (40%)

This element of the course is worth 40% and consists of two parts:

- Practical performance: You will be assessed in three different sports as a performer. One sport must be a team activity, one sport must be an individual activity and a third can be from either a team or individual activity.

- Coursework: analysis and evaluation of a performance to bring about improvement of performance in one of the chosen sports.

What qualification will I gain?*

GCSE Physical Education

Where will it take me?

Upon completion of this course, you will be qualified to go on to further study at sixth form or college. Qualifications would include A Level PE or BTEC Sport in PE. This course would also support entry to higher education courses in a very wide range of disciplines (depending on the subjects taken alongside). Courses include:

- Sport Studies and Business
- Sport Psychology
- Sports Education and Special and Inclusive Education
- Sport and Exercise Science

This course would be valuable particularly for any student interested in a career in the sport industry.

For further information contact

dwyllie@lordlawson.academy
Mr Wyllie - Subject Leader

* Please note that students who choose this option subject will not have a choice of GCSE or Cambridge National. It will be a department decision as to which course would be the most suitable for the individual student.



Photo by icon0.com

What will I learn?

This is a brilliant subject for anybody who is interested in other people's culture and beliefs. Never has it been so important to understand other people as it is in today's society. Often we seem to focus on differences – why not investigate the similarities between us and learn what makes people tick?

You will have the opportunity to expand your knowledge of beliefs, teachings and practices for Christianity and Buddhism, as well as evaluating their (and your own) responses to world issues such as crime and punishment, peace and conflict and social justice to name but a few.

Studying a qualification in religious studies will help increase not only your general knowledge but also your understanding of the world around you. Just like some of the great thinkers of the past, you will have the opportunity to ponder beliefs, values and ultimate questions about the world as well as developing transferable skills that will help you in other subjects, such as critical thinking, arguing and evaluating, public speaking, current affairs and note taking. As the philosopher Rene Descartes once said: "I think, therefore I am" – if you think this may be the subject for you, then I am sure you will love it!

How will I be assessed?

2 exams: each will be 1 hour 45 minutes

Paper 1 – Beliefs, Teachings and Practices for Christianity and Buddhism

Paper 2 – Themes in religion

What qualification will I gain?

GCSE Religious Studies

Where will it take me?

This is a great course for anybody who wants to work with people in any capacity. When you have to understand particular needs of people, which are often cultural or religious, this will give you a head start. Employers and universities look for people who can form a well-reasoned opinion and express and defend their opinion logically. These are skills that you will learn and develop within this subject. These higher order skills will be demonstrated through discussions, debates and extended written work.

Religious studies is particularly useful in careers such as law, teaching, medicine and uniformed services to name but a few. A North East employer survey in 2018 also showed that 89% of North East employers value a qualification in Religious Studies as a way to make a candidate stand out in job interviews. Could this be you?

For further information contact

jadairmcauley@lordlawson.academy
Ms Adair – Subject Leader



What will I learn?

This is a challenging course that covers a wide range of design and practical textiles including creating products for woven, knitted, stitched, printed or decorative textiles. You will get the opportunity to study in areas such as fashion design, costume design, constructed textiles, printed and dyed textiles, embellished textiles, surface pattern, interior design and soft furnishings. Over the two years, you will produce two large coursework projects inspired by a variety of themes, and the course will culminate in an externally set assignment with a 10 hour examination. This qualification is an excellent grounding for A level Fine Art and other art and design disciplines.

How will I be assessed?

Assessment is through a portfolio of work undertaken during the course of study (60%) and an externally set task (40%) in which you will create a personal response to one of the questions issued by the examination board. This includes a 10 hour controlled test period.

What qualification will I gain?
GCSE Textile Design

Where will it take me?

GCSE Textile Design is an excellent grounding for many future post 16 courses. The creative industry is vast, and textile design offers pathways into fashion design, costume design, interior design and surface and pattern design for fabric.



For further information contact

gpallas@lordlawson.academy
Mrs Pallas - Deputy Subject Leader

What will I learn?

The qualification enables you to develop your technical skills. These include market research skills, planning, promotional and financial skills using realistic scenarios, and personal skills (such as analytical skills, presentation skills and digital presentation). This will help you to develop independence and confidence in using skills that would be relevant to the business and enterprise sector from carrying out market research to reviewing whether a business proposal is financially viable.

How will I be assessed?

You will be required to complete and achieve all the components included in the qualification; which consists of two parts non-examined units (coursework) and one part exam.

The three components are:

- Enterprise and marketing concepts (exam)
- Design a business proposal (non-examined unit)
- Market and pitch a business proposal (non-examined unit)

What qualification will I gain?

OCR Level 1/Level 2 Cambridge National in Enterprise and Marketing

Where will it take me?

Study of the qualification as part of Key Stage 4 learning will help you to make more informed choices for further learning in this sector. The choices that you make post-16 will depend on your overall level of attainment and your performance in the qualification. Learners who generally achieve at Level 2 across their Key Stage 4 learning might consider progression to:

1. A level business qualification
2. Level 3 vocational qualification - BTEC Business
3. Business related apprenticeships, for example,

Project manager
Office manager
Business analyst
Research development manager



For further information contact

vness@lordlawson.academy
Miss Ness - Subject Leader

cwhite@lordlawson.academy
Mr White - Subject Teacher

* Students can opt for either GCSE or Vocational Business; however, the final decision for which course they will follow will be made by the department to ensure they follow the most suitable course.

What will I learn?

This qualification is for learners who wish to develop applied knowledge and practical skills in child development. It is designed with both practical and theoretical elements, which will prepare students for further qualifications in child care, health and social care, psychology, sociology and biology.

You will study three mandatory topics as follows:

1. Health and well-being for child development
2. Create a safe environment and understand the nutritional needs from birth to five years.
3. Understand the development norms of a child from birth to five years

The first topic of study underpins all of the other learning in this qualification. You will develop the essential knowledge and understanding in child development covering reproduction, parental responsibility, antenatal care, birth, postnatal checks, postnatal provision, conditions for development, childhood illnesses and child safety.

In the second topic of study, you will gain knowledge of the equipment needs of babies and young children and an understanding of the factors to be considered when choosing appropriate equipment to meet all these needs. This topic

will also cover nutrition and hygiene practices and you will be given the opportunity to investigate feeding solutions, comparing these to nutritional requirements and evaluating the outcomes. Evaluation skills are developed which will be useful in further studies in a number of areas.

In the third topic of study, you will gain an understanding of the development norms from birth to five years and the stages and benefits of play. You will gain knowledge of, and skills in, developing activities to observe development norms in children up to the age of five. This topic will include researching, planning and carrying out activities with a child and observing and evaluating these activities, as well as comparing the child to the expected development norms. Researching, planning, observing and evaluating skills will be useful in further studies as these are transferable skills and could be applied to many subject areas.

How will I be assessed?

You will complete one external exam and two coursework units.

External exam: 1 hour 15 minutes
Health and well-being for child development.
Written paper, externally assessed. Learners answer all questions.

Centre assessed coursework task

Create a safe environment and understand the nutritional needs of children from birth to five years old

Centre assessed coursework task

Understand the development of a child from birth to five years

What qualification will I gain?

OCR Cambridge National Level 1 or 2 Child Development

Where will it take me?

Knowledge gained would be useful for further studies in biology, health and social care and other child development qualifications. It is an appropriate qualification to take for future employment within the healthcare sector, and early years teaching.

For further information contact

gpallas@lordlawson.academy
Mrs Pallas - Deputy Subject Leader

What will I learn?

You will gain an understanding of the construction industry. This applied vocational qualification will give you experience of working with a range of construction materials and within a range of construction contexts. The applied purpose provides the opportunity for authentic work-related learning, but more than this, it will require you to consider how the use and application of your learning impacts on individuals, employers, society and the environment.

You will study unit 1 plus either unit 2 or 3.

1. Introduction to the built environment
2. Designing the built environment
3. Constructing the built environment

Unit 1 will introduce learners to the built environment and provide them with the opportunity to develop skills, knowledge and understanding in identifying, explaining and evaluating different ideas and concepts of the built environment. Learners will explore a range of profession and trade roles and some of the different structures and buildings of the built environment.

Unit 2 offers learners the opportunity to develop skills, knowledge and understanding of the design of the built environment, including exploring what is needed to interpret and produce drafts, drawings, and models of design plans.

Unit 3 offers learners the opportunity to develop skills, knowledge and understanding of three construction trade areas of the built environment, including planning, undertaking and evaluating construction tasks. Materials could include, plaster, brick, wood and textiles.

How will I be assessed?

Unit 1 - Introduction to the built environment

Externally assessed examination
1 hour 30 minutes
40% of the qualification

Unit 2 - Designing the built environment

Internally assessed unit
60% of the qualification

Unit 3 - Constructing the built environment

Internally assessed unit
60% of qualification

What qualification will I gain?

WJEC Level 1 or 2 Constructing the Built Environment



Where will it take me?

Upon completion of this course, you will be qualified to go on to further study, or embark on an apprenticeship or full-time career in the construction industries.

For further information contact

ymurray@lordlawson.academy
Miss Murray - Subject Leader

What will I learn?

This qualification has been designed to be a new, exciting and forward-thinking course that will prepare you for the modern digital world. This course will give you the opportunity to develop knowledge and skills in a practical learning environment. You will be able to explore key skills in digital information technology such as project planning, designing and creating user interfaces and creating dashboards to present and interpret data. Within this study, you will consider emerging technologies and security issues.

The digital sector is recognised as a major source of employment in the UK. There are around 1.5 million people working in digital companies and many thousands of digital jobs are advertised regularly. Digital skills span all industries; it is fair to say that almost all jobs in the UK today require employees to have a good level of digital literacy.

Your study will require you to complete all the units included in this qualification:

- 1. Exploring user interface design principles and project planning techniques.**
- 2. Collecting, presenting and interpreting data.**
- 3. Effective digital working practices.**

How will I be assessed?

Units 1 and 2

These units are assessed through internal assessment, and are 60% of the final grading (30% per component).

This style of assessment allows you to undertake assignments which are designed to be realistic tasks and activities. An example task for Unit 1 could see you exploring a range of different devices (e.g. mobile phones, tablets etc.) and exploring how different users interact with them. This could develop into a plan for a user interface with a final task for this unit being the use of software tools to create a user interface for a mobile phone app or website. Unit 2 could see you exploring data collection methods and creating a dashboard to use data manipulation tools.

Unit 3

This unit is externally assessed and is 40% of the final grade. You will explore how organisations use digital systems and what the wider implications of this are. You will focus specifically on modern technologies, their impact and the associated cyber security issues. This unit builds directly on Units 1 and 2. It is set and marked by the examining body via an assessment which needs to be completed in 90 minutes.

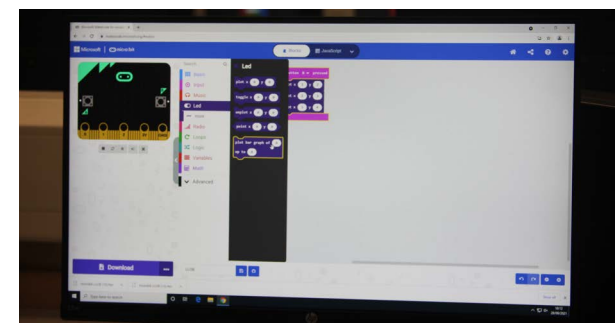
What qualification will I gain?

BTEC level 1 or level 2 Digital Information Technology

Where will it take me?

Digital skills are essential for success in employment and higher education. Much of the skills, knowledge and understanding in this qualification is transferable to virtually any other qualification or career route. Study of this qualification will allow for your progression to employment, apprenticeships or further study at Level 3.

This qualification would complement most learning in GCSE programmes and could be undertaken alongside the GCSE in computer science.



For further information contact

rmordey@lordlawson.academy
Mr Mordey - Subject Leader

What will I learn?

Hospitality and catering is a dynamic, vibrant and innovative sector delivering vital jobs, growth and investment in the heart of local communities. The sector is a major contributor to the UK economy and the third largest private sector employer in the UK.

Businesses which make up the hospitality sector include hotels, restaurants, coffee shops, pubs and bars, and contract caterers. Employment can range from waiting staff, receptionists, and catering assistants to chefs, hotel and bar managers, and food technologists.

You will gain experience in a wide range of practical skills and prepare and present a variety of dishes for your target audience. You will learn about the nutritional values of foods and how they are suitable for different groups. You will complete an internally assessed coursework unit which includes research, written and a practical exam.

How will I be assessed?

Unit 1 – Hospitality and Catering Industry (externally assessed written examination)

Worth 40% of the qualification

Unit 2 – Hospitality and Catering in Action (internally assessed unit)

Worth 60% of the qualification

What qualification will I gain?

Level 1 or 2 Hospitality and Catering

Where will it take me?

Upon completion of this course, you will be qualified to go on to further study, or embark on an apprenticeship or full time career in the hospitality and catering industries.

- Chef/head chef
- Food scientist
- Food manufacturer
- Restaurant manager
- Dietician



For further information contact

ymurray@lordlawson.academy
Miss Murray - Subject Leader

What will I learn?

Elite sport has embraced sport science disciplines wholeheartedly in the past few decades, moving from a perspective which assumed the primacy of natural talent in producing outstanding performance, to one which considers every minute detail of an athlete's training programme, rest time, environment and psychology in the pursuit of excellence.

You will learn three units over the course of two years. The three units consist of two mandatory units and an optional unit which will be chosen by your teacher based on a student's best interests.

How will I be assessed?

Mandatory units

• Reducing the risk of sports injuries and dealing with common medical conditions

This unit holds 40% of your overall grade and is assessed by a written exam paper (70 marks), lasting 1 hour and 15 minutes.

• Applying the principles of training: fitness and how it affects skill performance

This unit holds 40% of your overall grade and is assessed using a centre assessed task (80 marks) which is moderated by OCR.

Optional unit

• The body's response to physical activity and how technology informs this

This unit holds 20% of your overall grade and is assessed using a centre assessed task (40 marks) which is moderated by OCR.

Or

• Nutrition and sports performance

This unit holds 20% of your overall grade and is assessed using a centre assessed task (40 marks) which is moderated by OCR.

What qualification will I gain?*

OCR Cambridge National Award Level 1 or 2 Award Sports Science

Where will it take me?

Upon completion of this course, you will be qualified to go on to further study at sixth form or college.

Qualifications would include A Level Physical Education or BTEC Sport in Physical Education. This course would also support entry to higher education courses in a very wide range of disciplines (depending on the subjects taken alongside). Courses include:

- Sport Studies and Business
- Sport Psychology
- Sports Education and Special and Inclusive Education
- Sport and Exercise Science

This course would be valuable particularly for any students interested in a career in the sports industry.

For further information contact

dwyllie@lordlawson.academy
Mr Wyllie - Subject Leader

* Please note that students who choose this option subject will not have a choice of GCSE or Cambridge National. It will be a department decision as to which course would be the most suitable for the individual student.



Deadline for submission of options:
Thursday 15 February 2024

Lord Lawson of Beamish Academy, Birtley Lane,
Birtley, Co. Durham, DH3 2LP

T: 0191 433 4026 **E:** lordlawson@lordlawson.academy
W: lordlawson.academy or follow us on twitter [@llobacademy](https://twitter.com/llobacademy)

