



f6rm
@ LLOB

Welcome to our Sixth Form



• Trust • Respect • Courage • Ambition

“ Together we grow, learn and succeed ”



Letter from the Principal

Dear Prospective Sixth Former

Welcome to the prospectus for students thinking of joining our sixth form in September 2023. Here at Lord Lawson of Beamish Academy we are proud of our sixth form – it is a thriving and exciting place to study, to make friends, and to grow in character. Our school vision is that “together we grow, learn and succeed,” and nowhere is this more true than in our sixth form. Please come and see for yourself!

Your Sixth Form – a great place to grow, learn and succeed

Your sixth form centre at Lord Lawson is well-equipped to give you everything you need to succeed. Teaching is very strong, and learning is supported by outstanding pastoral care, led by a dedicated team of tutors who get to know you really well. Your Independent Learning Centre and Sixth Form Common Room are for your exclusive use, and you have shared use of the other excellent facilities in the academy. Your choices of subjects can include traditional academic A level options and a range of more applied subjects.

Your Success

As a sixth former at Lord Lawson, you follow in a long line of highly successful students, many of them now studying at some of the best universities in the country, or already well-established in their chosen careers. A growing number of our students also go on to secure higher level apprenticeships.

With the right attitude, a healthy approach to work, and a willingness to try your best, we can guarantee that you too will enjoy success.

Your Opportunities

We encourage you to get involved at Lord Lawson. There is a broad and ambitious enrichment programme available, including opportunities to participate and excel in sport, drama, music, performing arts and other activities. Our programme of visits and talks will help you imagine your future more clearly, and links with local businesses and universities help you to see purpose in your studies and help prepare you for your next step. Last year, we had to make a number of changes to our visits programme, but this helped us improve our links with universities, businesses and advisers across the country. We will build on these strong links for your benefit. We hope that you will also want to become involved within the academy, perhaps becoming Head Girl or Head Boy, or helping younger students with their studies.

Our Guarantee

We believe that we can offer you the best sixth form experience. We guarantee to help you find the right courses, support you in your studies, offer you a wealth of extra opportunities, and keep you informed about the progress you are making. We look forward to welcoming you to your sixth form!

Yours sincerely,

Andrew Fowler

Principal

Contents

- 2. Principal's welcome
- 4. What's on offer?
- 5. Choosing courses
- 6. Meet our Sixth Form team
- 7. Sixth Form welcome
- 8. Sixth Form opportunities
- 10. Students' contract
- 10./11. Bursary fund
- 12. Next steps to joining our Sixth Form
- 13./14. Life after Lord Lawson
- 15. Courses our students go on to study
- 16. Destinations
- 17. Results

National extended certificates Level 3 courses

- 18. Applied Psychology
- 19. Applied Science
- 20. Business
- 21. Computing
- 22. Health and Social Care
- 23. Music

A level/ A2 courses

- 24. Art and Design
- 25. Biology
- 26. Business Studies
- 27. Chemistry
- 28. Dance
- 29. Drama and Theatre
- 30. English Language
- 31. English Literature
- 32. French
- 33. Further Mathematics
- 34. Geography
- 35. German
- 36. Graphics
- 37. History
- 38. Mathematics
- 39. Music
- 40. Photography
- 41. Physical Education
- 42. Physics
- 43. Politics
- 44. Psychology
- 45. Sociology

46/47. Don't just take our word...

Welcome

Welcome to Lord Lawson of Beamish Academy's Sixth Form prospectus.

The next step in your educational journey are both exciting and important. It is a time when you are able to choose subjects that you enjoy from a selection of academic and vocational courses. The qualifications that you gain in these subjects will allow you to progress to university, an apprenticeship or into the world of work.

The information provided in the prospectus, as well as discussions with subject and careers staff, will help you to make the right decisions about your future and ensure you choose the right courses for you. As part of the support we offer to help you make these choices, all students are invited to attend an interview with a senior member of staff to discuss their preferred subjects and to offer guidance on their application.

You will see from the prospectus that there is a wide range of courses on offer. All our students sign up to a study programme which includes both academic and enrichment opportunities. Please look through this prospectus carefully in preparation for your interview where you will get the chance to discuss your personal pathway in more detail. Within the prospectus there are contact details if you have any specific subject questions.



Mrs K Kendall
Assistant Principal – KS5
kkendall@lordlawson.academy
0191 433 4026 ext 211

Courses we offer

- A level courses
- BTEC courses
- GCSE resit opportunities in Maths and English
- Sixth Form Studies Programme
- EPQ

Choosing courses

There is a wide range of courses on offer in our sixth form and it is important that you select the right courses from the start.

You should choose courses that will allow you to move onto the career or studies you are targeting in the future. Some degree courses require particular A levels/BTECs and grades, so you need to research this before you start making choices.

It is a good idea to pick subjects that you will enjoy and be successful in. Talk to your teachers about what is involved and your suitability for their courses. Also talk to older students who are currently studying the courses that you might be interested in.

Gather as much information as you can from this prospectus and listen carefully to the advice offered at your individual interview that you will attend with your parents/carers. All of this will give you information about the best pathway for you.

The tables below shows how the proposed courses are organised.

Students will pick 3 subjects from the 2 year courses offered below. Any students wanting to do 4 A levels will be interviewed on an individual basis.

A levels

Art and Design	Biology	Business Studies	Chemistry
Dance	Drama and Theatre	English Language	English Literature
French	Further Mathematics	Geography	German
Graphics	History	Mathematics	Music
Photography	Physical Education	Physics	Politics
Psychology	Sociology		

Vocational - 1 A level equivalent

Applied Psychology	Applied Science	Business	Computing
Health and Social Care	Music		

Please note, these courses are offered at time of print and are subject to change. Check the website for the most up to date information.



Meet some of our Sixth Form team



Sixth Form welcome



Mrs Jordan
Head of Sixth Form
ajordan@lordlawson.academy
0191 433 4026 ext 230

Welcome to our Sixth Form prospectus. We are a supportive and inclusive Sixth Form which aims to promote academic achievement for all students. Students are given greater responsibility for their own learning during their time with us and we encourage them and work with them to make well informed decisions about their futures. Sixth Form students are expected to be mature role models to the rest of the academy.

Our enrichment programme is wide and varied providing opportunities during assemblies, Personal Development lessons and the tutorial programme. These activities embrace the spiritual, moral, social and cultural development of our students, and can include visits from outside speakers, developing independent study skills and the opportunity to complete the Extended Project Qualification (EPQ). We also host a week long Life After Lord Lawson event at the end of Y12 which includes taster day visits to universities, life skills, workshops, apprenticeship opportunities and links with local businesses and employers. All students take part in a week long relevant work experience in a vocation they are interested in pursuing. We have an active Sixth Form Council led by the Head Boy and Girl which organises charity and social events and has a say in the decision making of the academy.

All Sixth Form students benefit from advice from specialist career advisors regarding university, apprenticeships and employment opportunities. Our team of experienced tutors assist with UCAS applications and help prepare students for work, interviews and their futures.

We strive to ensure the success of all students with a strong pastoral care programme and we look forward to working with you.

Sixth Form Pastoral Leader & ILC Manager

Mr Mc Govern is always available in the ILC to help students with any queries or problems.

pmcgovern@lordlawson.academy
0191 433 4026 ext 205



Sixth Form opportunities

Sixth Form opportunities

Individual Maths Challenge **In2Med school Maths problem solving sessions** Invest in programmes for journalists, doctors and lawyers **Art workshops at National Glass Centre** **Mock court day at Sunderland University Law department** **History lectures at Durham University** **Geographers visit coastal locations in Northumberland for fieldwork** **English Literature visits to the National Theatre** **History visit to Berlin** **Physics visit CERN in Sunderland** **STEP classes (Further maths; ran by FMSP)** **Auschwitz lessons from History Programme** **Sixth form rugby, netball & football team** **Geographers visit Iceland** **Maths visit Durham University** **English Literature attend live seminars** **Sixth Form organise Jeans for Genes Day** **Geographers attend public lectures at local universities** **Maths attend Newcastle University masterclass day** **Thinking Physics residential at Northumbria University** **Senior Maths team challenge HMRC Workshops** **Skiing in Austria** **Macmillan Coffee Morning** **Children in Need Fundraising** **University Open Days Bonn and Cologne** **vocation workshops** **Oxford and Cambridge workshops**



Emily Malloy - Head Girl and Owen Haygarth - Head Boy



Children in need



Sixth Form Prom



MacMillan coffee morning



Wear Pink for Breast Cancer awareness



World Book Day



MacMillan coffee morning



Sixth Form Prom

Students' contract

Students are expected to follow the following contract:

Learning contract This is what we expect. This contract is signed by all students.

Punctuality

Registration is at 8.50 am. Students should arrive in the academy at this time every day.

Attendance

Students are required to be in the academy for the normal full school week. Most students achieve over 95% attendance because they realise that good attendance is a vital part of being successful.

Study lessons

Students negotiate with their tutors which lessons to devote to private study. Some lessons are designated as study lessons which are for quiet study in the Sixth Form Independent Learning Centre.

Independent study

Homework is an essential part of Sixth Form life. Most students should receive between 12 - 16 hrs of homework per week. Part time work should not interfere with this.

Leaving the site during the school day

Appointments should be made out of school time or, if unavoidable, during non-contact periods and students must sign out for these. Driving lessons may be arranged with prior consultation for non-contact time. All students must always sign in and out of the academy.

Holidays

Holidays should not be taken during term time.

16-19 Bursary fund

The Government has a bursary scheme to support the most vulnerable 16 - 19 year olds who continue in full-time education.

What is the purpose of 16-19 Bursary fund?

"The 16 - 19 Bursary fund is designed to help support young people who face the greatest barriers to continuing in education, or training post-16." (Education Funding Agency).

The objectives of Lord Lawson of Beamish Academy's 16 to 19 Bursary Policy are to:

- to provide financial support to help students overcome specific financial barriers so they can remain in education
- to ensure that vulnerable students receive their bursary entitlement
- to award discretionary bursaries to other students based on individual need

16 -19 Bursary fund

We also hope to help raise aspirations and provide support and equality of opportunity, particularly for students wishing to access higher education.

16 - 19 Bursary fund

High Priority for Students who are: <ul style="list-style-type: none"> • in care / looked after • care leavers • receiving Income Support, or Universal Credit because they are financially supporting themselves or financially supporting someone who is dependent on them and living with them such as a child or partner • receiving Disability Living Allowance or Personal Independence Payments in their own right as well as Employment and Support Allowance or Universal Credit in their own right 	<p>Up to £1,200 per year (or pro rata for courses lasting less than 30 weeks)</p>
Medium Priority for Students who: <ul style="list-style-type: none"> • live in a household with a gross annual household income of below £21,000 • are in receipt of Free School Meals • lives in a household that is in receipt of other income-based, means tested benefits 	<p>Other expenses may be considered on application.</p> <p>How much bursary students receive is based on each student's individual circumstances and their actual financial need. These will vary from student to student, depending on, for example, their household income, the distance they need to travel to the institution and the requirements of their study programme.</p> <p>These awards may be made in kind (e.g. travel passes, revision guides) rather than monetary amounts.</p>
Low Priority Students: <ul style="list-style-type: none"> • Ad hoc support for other students facing unexpected significant financial barriers to learning. 	<p>Emergency awards to support students who face exceptional circumstances during the year that impact on their ability to participate.</p> <p>Ad hoc awards supporting industry placements / work experience / university visits where students may find themselves facing financial difficulties due to incurring extra participation costs, for example, because they need to pay for additional travel to their placement.</p>

Applying for a Bursary application form

To apply students should pick up a Bursary application form from the ILC and complete it as soon as possible with evidence of household income (if students are not in receipt of free school meals). Students will need their own bank account for payments.

If students are unsure or have any questions about the 16 -19 Bursary then please speak with any member of the Sixth Form team.

Next steps to joining our Sixth Form

We take students from both Lord Lawson of Beamish Academy and from other schools in the area. Our admissions process aims to ensure that all students have access to appropriate courses that they will, with the right attitude and work ethic, be very successful in. The process of recruitment starts early in November and is designed to help provide as much information, advice and guidance as possible to help students make these important decisions for their next steps. All students will take up 2 year courses in A levels, BTECs or a combination of both.

Entry requirements

- Our course centre requirements for all courses are grade 4 or above in 5 subjects including GCSE English Language and GCSE Mathematics with a good attitude to learning.
- Students will also need to meet the course entry grades for the subjects applied for as specified in the prospectus. The majority of A levels require a grade 6 or higher in a particular subject. Please see individual subject pages.
- Our Sixth Form students are role models to our younger pupils in terms of their aspirations and academic contributions. They will be guaranteed an individual Study Programme that meets their needs and will be expected to sign the Sixth Form Learning Agreement.
- In order to be successful in the courses we offer, students will need to have grade 4 in both English Language and maths. We do understand that for a small minority of students, there may be issues surrounding this so we will speak to applicants on an individual basis with their parents/carers before admission if this is the case.

Admissions timelines

- Applications to be completed by Friday 18 November 2022
- Consultation with a senior member of staff in December 2022
- All offers will be made by February half term 2023
- Introduction to Sixth Form event to take place at end of June 2023
- GCSE results Thursday 24 August 2023
- Enrolment day Thursday 24 August 2023

University
Open Days
Employability
Skills Interviews
EPQ Gap Years

what uni?

CV

#Gotthejob
Duke of Edinburgh
Careers Fair

UCAS

Degree Apprenticeships

Life after Lord Lawson event

Eating on a budget



Life after Lord Lawson event

First Aid



Courses our students go on to study

- **Accounting** • **Architecture** • **Biomedical Science** • **Business and Economics** • **Business and Management** • **Childhood Studies**
- **Community and Youth Work Studies** • **Criminology and Forensic Science** • **Diagnostic Radiography** • **Economics and Finance**
- **English and Creative Writing** • **Fashion Marketing and Branding**
- **Food Business Management and Marketing** • **Geography**
- **Geography and Environmental Sciences** • **Geographic and Information Science** • **Geology** • **Health and Social Care**
- **Human Resource Management** • **Law** • **Linguistics** • **Marketing**
- **Mathematics** • **Media Communications** • **Medicine** • **Natural Sciences** • **Nursing** • **Professional Policing** • **Physics** • **Psychology**
- **Psychology and Counselling** • **Real Estate** • **Sociology** • **Sport and Exercise Psychology** • **Textile Design** • **Veterinary Nursing**

Courses our students go on to study

Gap year experiences to

Cambodia
Thailand
Malawi
Chile
Tokyo



What a Difference a Year makes...

Destinations

Our Sixth Form students have gone on to study at some of the following destinations:

- Askham Bryan • Bath Spa • Central Lancashire • Cambridge • Durham • De Montfort
- Edinburgh • Newcastle • Northumbria • Nottingham Trent • Liverpool • Liverpool Hope
- Liverpool John Moores • Lancaster • Leeds Art • London South Bank • Loughborough
- Manchester • Oxford • Salford • Sunderland • Sussex • Teesside • York • York St John





Applied Psychology

What will I learn and how will it help me?

Have you ever wondered why some people behave aggressively whilst others prefer to be calm? Or why some people may thrive in the run up to exams but others may feel overcome by stress? What causes mental illnesses and how can we prevent or treat them?

This course offers an opportunity to study human behaviour in a hands on way. You will learn how to investigate and research contemporary issues which face individuals and society. The skills that you will develop during this course will prepare you for further study, an apprenticeship and the world of work.

The course is made up of two examined units and two coursework units covering a variety of different behaviours.

Some of the examined content looks at:

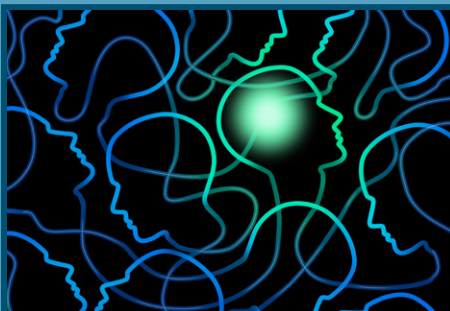
- What causes aggression in modern society?
- What makes people conform or obey others?
- Why do we get stressed and how can we prevent it?
- What influences gender development?
- What factors affect consumer behaviour?
- What factors influence alcohol, gambling and shopping addictions?
- How can we treat psychological illnesses?

Internally assessed coursework projects may include:

- An in depth look at how we research, measure and predict behaviour.
- Looking at explanations and preventions of criminal behaviour.
- Looking at explanations and treatments for psychological illnesses such as depressions, schizophrenia, eating disorders and self-harm.

Further Information:

Contact Mrs A Rutherford
arutherford@lordlawson.academy



ENTRY REQUIREMENTS

Course centre requirements + grade 4 or above in English, maths and science.

IS THIS COURSE FOR ME?

BTECs embody a fundamentally learner-centred approach to the curriculum, with a flexible, unit-based structure and knowledge applied in project-based assessments. They focus on the holistic development of the practical, interpersonal and thinking skills required to be able to succeed in employment and higher education.

WHERE CAN IT TAKE ME?

The qualification carries UCAS points and is recognised by higher education providers as contributing to admission requirements to many relevant applied psychology courses. You will also develop the following skills that are desirable to future employers:

- cognitive and problem-solving skills
- interpersonal skills
- intrapersonal skills

Applied Science

What will I learn and how will it help me?

This qualification will provide learners with a broad understanding of vocationally-related sciences to support progress to higher education. This qualification can also prepare learners to take up employment in the applied science sector, either directly after achieving the qualification or via higher education.

Studying this qualification will enable learners to develop their knowledge and understanding of scientific principles, as well as those scientific practical skills recognised by higher education institutions and employers to be most important. The qualification also offers learners an opportunity to develop transferable skills such as problem-solving, research and communication as part of their applied learning.

In year 12 you will study:

Unit 1 - Key Concepts in Science
Written Exam

Unit 2 - Applied Experimental Techniques
Portfolio Internally Assessed
Coursework

Unit 3 - Science in the Modern World
Written Exam with pre-release material

Further Information:

Contact Mr L Croucher
lcroucher1@lordlawson.academy



ENTRY REQUIREMENTS

Course centre requirements + minimum grade 4 in science.

IS THIS COURSE FOR ME?

It is suitable for studying alongside substantial academic science qualifications, such as A level sciences or other Level 3 vocational qualifications. This qualification can also prepare learners to take up employment in the applied science sector, either directly after achieving the qualification or via higher education.

WHERE CAN IT TAKE ME?

Level 3 Applied Science is a good choice for students considering higher education in any science-based course, including: Biochemical Sciences, Food Technology, Human Physiology, Nursing, Sports Science, and Materials Science.

Business

What will I learn and how will it help me?

The study of business requires of you an interest in the real and ever changing world from the perspective of real organisations and individuals concerned with providing the goods and services which we want. You need to be prepared to research real businesses to enhance your understanding and application of business concepts and processes.

BTEC Level 3 National Extended Certificate in Business. What does this qualification cover?

The content of this qualification has been developed in consultation with academics to ensure that it supports progression to higher education. Employers and professional bodies have been involved and consulted in order to confirm that the content is appropriate and consistent with current practice for learners planning to enter employment directly in the business sector.

The learning programme covers the following content areas:

- Business environments
- Finance
- Marketing

Is a BTEC worth the same as an A level?

Yes, universities recognise BTEC qualifications and they carry the same amount of UCAS points as traditional A levels.

Further Information:

Contact Mr C White
cwhite@lordlawson.academy



ENTRY REQUIREMENTS

Course centre requirements + minimum grade 4 in business. Students will be considered on an individual basis if they have not studied business before.

IS THIS COURSE FOR ME?

Are you better at coursework than exams? You will learn about the business environment and what can make a business successful. You will learn about how businesses build successful marketing campaigns and how they manage their finances. Studying this course will help to prepare you for employment and you will have the opportunity to visit existing businesses.

WHERE CAN IT TAKE ME?

This course will help you to understand how businesses operate and will prepare you for a career in a variety of fields such as working for a business or being self-employed. Studying BTEC Business will give you the chance to investigate real life businesses and help you to develop your written and verbal skills whilst completing coursework assignments and preparing for a final exam.

Computing

What will I learn and how will it help me?

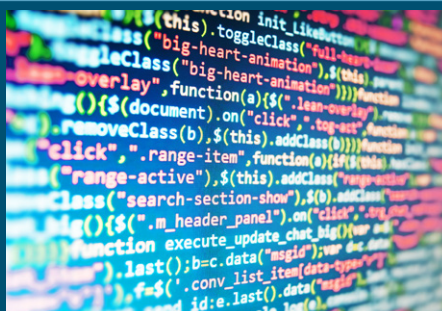
The BTEC National in Computing is an offer that compounds robust academic study with the benefits of BTEC assessment. This means that there are elements of coursework alongside externally assessed units. The extended certificate comprises of 3 units which are mandatory. These are; Principles of Computer Science, Fundamentals of Computer Systems and IT Systems, Security and Encryption. The optional unit of study is Computer Games Development. Coursework forms 40% of your final grade.

The Principles of Computer Science unit covers the principles that underpin all areas of computer science. It will support development of computational thinking skills and your ability to apply these skills to solve problems across much wider contexts. The Fundamentals of Computer Systems looks at hardware and software, how components work together and data. IT System Security considers security threats and methods to protect IT systems, including data encryption.

Computer Games Development provides an option to investigate the computer games industry. You will be required to design and develop a computer game to meet given specification.

Further Information:

Contact Mr A Campbell
acampbell@lordlawson.academy



ENTRY REQUIREMENTS

Course centre requirements. All students will be considered on an individual basis if they have not studied IT before.

IS THIS COURSE FOR ME?

The balanced range of assessment methods mean that you can demonstrate your knowledge of the sector in a range of scenarios, supporting your steps into higher education or a career. The course has a one year learning aim and will provide you with some flexibility should you be unsure of your future pathways.

WHERE CAN IT TAKE ME?

This is a very sound BTEC offer which carries the same UCAS points as an A level. It provides flexibility and demonstrates A level of academic study within a balanced assessment opportunity. This would be a sound foundation for entry to university across a range of subjects.

Health and Social Care

What will I learn and how will it help me?

Cambridge Technical certificates are vocational qualifications for students aged 16+. They're designed with the workplace in mind and provide a high-quality alternative to A levels. The Cambridge Technical Extended Certificate in Health and Social Care will develop your professional and personal skills through interaction with people who either work in the sector or require care or support, as well as theoretical knowledge and understanding to underpin care skills.

Learners will take six units made up of mandatory and optional units: Everybody will study the following mandatory units:

- Building positive relationships in health and social care
- Equality, diversity and rights in health and social care
- Health, safety and security in health and social care
- Anatomy and physiology for health and social care

These units will give learners an understanding of health and social care in the wider contexts of different environments and settings where care takes place, the importance of effective communication in health and social care, the importance of legislation in health and social care and how to deliver a person-centred approach in the care given. Learners will also develop transferable skills such as communication, research, planning and organisation.

The units are graded Pass, Merit and Distinction. This qualification is graded Pass, Merit, Distinction, and Distinction*. The course is very demanding and you will be required to do a great deal of independent work. The qualification is an excellent foundation for job roles in the social care industry, healthcare and children's learning.

Further Information:

Contact Miss Y Murray
ymurray@lordlawson.academy



ENTRY REQUIREMENTS

Course centre requirements plus a minimum Grade 4/Pass in GCSE or Cambridge National Child Development or Health and Social Care. Students will be considered on an individual basis if they have not studied either of the courses above previously. Grade 5 or above in science would be an advantage.

IS THIS COURSE FOR ME?

This course is suited to those with an interest in the health and social care industry who want to gain A level 3 qualification to support further study in Further Education or Higher Education in health and social care subjects. It covers all life stages, health, social and care industries as well as biology, sociology and psychology.

WHERE CAN IT TAKE ME?

This qualification will provide learners with the skills, knowledge and understanding to progress into Higher Education on a subject related programme such as Health and Social Care, Nursing, Social Work or Early Childhood Studies.

Music

What will I learn and how will it help me?

The music industry is a very diverse but difficult industry to work in. This qualification will give you an insight into what it is really like as well as giving you opportunities to develop the range of skills needed to be a performer and developing further skills for success in the industry as well as studying a unit on the Music Industry and developing your Music theory skills.

How will it be assessed?

You will develop a portfolio which will demonstrate your knowledge of music theory through practical presentations and you will create original music in response to a brief. You will plan, prepare and deliver musical performances as a soloist in a recital. These will be internally assessed.

For your musical ensemble development you will prepare three pieces. You will also be given the opportunity to see what it's really like to be self-employed and bid for contracts in the music industry. These will be externally assessed.

Further Information:

Contact Mrs R Hall
rhall@lordlawson.academy

Subject Leader in case of queries
sbrown@lordlawson.academy

* The final choice of course: BTEC or A Level Music will be agreed with students.



ENTRY REQUIREMENTS

BTEC level 2 music (MERIT) or GCSE grade C or above. All students who take this course must be able to sing or play an instrument and be prepared to do so in front of an audience. All students will be considered on an individual basis.

IS THIS COURSE FOR ME?

If you have a passion for performing either as a vocalist or instrumentalist and you love performing as a soloist and a member of an ensemble then this course is a must for you! If you wish to pursue a career in the industry, enjoy planning and preparing a range of tasks in both performance and production roles and relish working as part of a team you will have developed the relevant skills, knowledge and understanding of the professional practice required to work in the music industry.

WHERE CAN IT TAKE ME?

This course offers students the opportunity to develop skills, knowledge and understanding for entry into employment or self-employment in the arts and entertainment field. You can also go on to study a music degree course.

Art and Design

What will I learn and how will it help me?

We deliver a diverse qualification aimed at students wishing to enter careers across many areas within the visual arts such as fine art, mixed media, site specific art, installation, graphics, web design, fashion, textiles, animation or photography.

Groups are taught through a mixture of teacher led sessions, group work and individual tutorials. Contextual studies are fundamental to visual art and design practice. Within projects we analyse the work of artists, crafts people and designers; this features strongly in all aspects of the course. We take advantage of opportunities to work with galleries and museums.

As your portfolio progresses you will build on your specialist area of expertise and develop highly personal, professional outcomes.

This course is predominately coursework, with the A level coursework being worth 60%. Your portfolio work will culminate in an externally set assignment worth 40%. This is another coursework unit which ends with a controlled test, producing a final outcome in exam conditions. All coursework and examinations are teacher assessed.

Further Information:

Contact Miss C Dixon
cdixon@lordlawson.academy



ENTRY REQUIREMENTS

Course centre requirements + minimum grade 5 in Art and Design or grade 4 with teacher recommendation.

IS THIS COURSE FOR ME?

This requires self discipline, motivation and independence. It is important to manage time well and meet deadlines. You should show an interest and a passion for the subject and be prepared to respond to feedback.

WHERE CAN IT TAKE ME?

The art and design industries employ millions of people world wide and a qualification in art is a great grounding for university degrees in a variety of fields including fashion, textiles, graphics and photography. Beyond university the creative industries offer wide ranging career paths including graphic designers, fashion designers, buyers or merchandisers, architects, product designers, textile artists, ceramicists, games designers, web designers, advertisers and photographers etc.

Biology

What will I learn and how will it help me?

You will study 8 different units throughout the two years, giving you a broad understanding of biological sciences. Topics include: biological molecules, cells and the immune system, exchange surfaces and mass transport, DNA and biodiversity, photosynthesis and respiration, how organisms respond to their environments, genetics and finally the control of gene expression.

How will it be assessed?

This course will be assessed through 3 written exams held at the end of the two year course. There is also an additional practical endorsement, which is a pass/fail grade assessed by teachers during the 12 required practicals carried out over the two year curriculum.

Further Information:

Contact Miss E Craig
ecraig@lordlawson.academy



ENTRY REQUIREMENTS

Course centre requirements + minimum grade 5 in both English and maths, and grade 6 in biology or combined science. Grade 5 in biology or science from the higher paper will be considered with a teacher recommendation.

IS THIS COURSE FOR ME?

Biology is the study of life. If you are interested in learning more about how your body functions, why our DNA controls our characteristics or understanding more about the challenges facing life on earth, then this is the course for you.

WHERE CAN IT TAKE ME?

Biology is a valuable and highly respected subject for students going into careers with or without science.

You can:

- Go straight into employment in many related areas, for example pharmacy, biotechnology or land management.
- Go on to study a biology or biology related degree
- Enter fields such as medicine, veterinary science, biomedical engineering, dentistry, or forensics.

Business Studies

What will I learn and how will it help me?

You are likely to work for a business at some point in the future, unless you decide to run your own. Either way, knowing how businesses operate can be crucial in helping to manage one – regardless of what department you work in.

We will consider a broad overview of topics, ranging from looking at:

- How can we motivate staff? And why is this so important?
- What strategic direction should the business take? And what do top business theorists say on this matter?
- How can we ensure that our business has a healthy financial state?
- What can we do operationally to reduce costs, so that the marketing guys can reduce our prices?
- How will a diverse range of cultures globally impact on our business?

Businesses have to consider a variety of these issues, including many more. Therefore, it is no wonder that business degrees and higher-level apprenticeships have become one of the most popular courses because everyone is talking BUSINESS, so come and join us!

Further Information:

Contact Miss V Ness
vness@lordlawson.academy



ENTRY REQUIREMENTS

Course centre requirements + minimum grade 5 in English and maths. Minimum grade 5 in business.

IS THIS COURSE FOR ME?

We start by looking at what is necessary to start up a small business, then consider the financial, marketing, human resources and operational aspects of running a business and finally consider the issues facing businesses in the real world.

WHERE CAN IT TAKE ME?

A degree in business/management/admin/marketing/finance or similar career in banking, business management or perhaps starting your own business for real!

Chemistry

What will I learn and how will it help me?

Chemistry is all around us and affects every aspect of our everyday lives. You will gain an insight into why some reactions take place while others don't. You will discover why energy changes take place between different types of reactions and how atomic structures relate to this. Once chemical concepts have developed, applications to real life situations are considered.

In A level Chemistry you will cover the following subjects and more:

- Entropy- disorder, chaos, and spontaneity in reactions.
- Aromatic Chemistry- Kekule's structure or benzene ring?
- Equilibria & Le Chatelier- controlling closed systems for our benefit.
- Electrochemical cells- how chemistry created the battery!
- Halogenoalkanes- did we almost destroy the Ozone layer?
- Proteins & DNA- the chemistry behind our most important biological molecules.

How will it be assessed?

Three 2 hour synoptic exams and a Practical endorsement:

- Paper 1 Physical and Inorganic Chemistry
- Paper 2 Physical and Organic Chemistry
- Paper 3 All strands of Chemistry linked to the Required Practicals
- Centre Assessed Practical Endorsement

Further Information:

Contact Miss S Falconer
sfalconer@lordlawson.academy
Mrs C Robson
crobson@lordlawson.academy



ENTRY REQUIREMENTS

Course centre requirements + minimum grade 5 in English and maths. Grade 6 in chemistry or combined science.

IS THIS COURSE FOR ME?

Are you a problem solver? Do you like using logic to work out difficult ideas? Chemistry uses mathematical skills and logic to determine whether reactions will take place. You will learn the 'rules of Chemistry' and apply them to situations presented to you.

WHERE CAN IT TAKE ME?

A qualification in Chemistry opens the door to many careers: medicine, dentistry, pharmacy, veterinary science, forensics, brewer, engineer, art restorer, quality controller, accountancy. An A level in Chemistry would also be a strong bonus for entry into most universities as practices a wide range of skills.

Dance

What will I learn and how will it help me?

You may wish to develop existing dance skills to a professional standard or discover the hidden dancer within you. You may wish to experience your 15 minutes of fame performing on stage or develop lifelong skills. Whatever your ambitions, dance will challenge you outside of your comfort zone, increase your self-esteem and encourage you to reach your full potential. You will study a range of classic dance styles and techniques through modern methods and study the theoretical aspects of dance history and development.

Lord Lawson of Beamish Academy Dance Department has strong links with local and national dance agencies including Dance City, Ballet Lorent, Famous415 and Sunderland University. Working with professional practitioners and choreographers you will gain an insight into the professional dance world.

Throughout the A level dance course you will study two components:

Component 1: Performance & Choreography

Assessed in a practical exam which is 80 marks/50% of A level

This includes:

- Solo Performance inspired by the work of a dance practitioner
- Performance in a quartet
- Group choreography

Component 2: Critical Engagement

Assessed in a written exam which is 100 marks/50% of A level

- Written exam 2 hours 30 minutes

Testimony

"I studied GCSE and A level Dance at Lord Lawson and I feel this really helped and pushed me to successfully move onto my next chapter after Sixth Form.

I'm now in my third and final year of studying Musical Theatre and Dance on an unconditional scholarship at Laine Theatre Arts, London. I believe the valuable skills,



ENTRY REQUIREMENTS

Course centre requirements + minimum grade 5 in GCSE Dance. All students will be considered on an individual basis if they have not studied dance before. You must have a dance background to access the requirements of the course.

IS THIS COURSE FOR ME?

If you want to challenge your dance skills in performance, choreography and critical engagement then this course is for you. A passion for dance is essential to success in A level dance.

WHERE CAN IT TAKE ME?

This could lead to full time dance study and a future career in Dance Performance, Dance teaching, community work or dance/ performance therapy.

support and opportunities A level Dance at Lord Lawson provided played a vital part in my journey towards my training and future career. I will always be thankful I studied A level Dance as I strive towards my dream career in the Performing Arts Industry."

Georgia Robson, A level Dance Graduate 2018.

Further Information:

Contact Miss S Brown
sbrown@lordlawson.academy

Drama and Theatre

What will I learn and how will it help me?

A level Drama and Theatre aims to inspire students to become independent theatre makers through the development of skills they will need to go on to higher education, whether that is to study a course in drama and theatre or another subject. This qualification emphasises practical creativity alongside research and theoretical understanding. Students are encouraged to collaborate, communicate and create pieces of their own theatre; as well as study a variety of styles, practitioners and scripted texts. Students learn through experience, seeing theatre and making theatre for themselves. Students will be invited to a number of theatre visits, which will be studied throughout the course.

Component 1a:

Interpreting Drama through Live Theatre

Component 1b:

Interpreting Drama and Theatre through the ages

Component 2:

Creating Original Drama (Presentation of performance)

Component 3:

Making Theatre (Presentation of scripted Performance)

Further Information:

Contact Miss J Race

jrace@lordlawson.academy

Subject Leader in case of queries

sbrown@lordlawson.academy



ENTRY REQUIREMENTS

Course centre requirements + minimum grade 5 in drama. All students will be considered on an individual basis if they have not studied drama before. You must have a drama background to access the requirements of the course.

IS THIS COURSE FOR ME?

If you wish to be creatively challenged, engaged and motivated then this is the course for you. You must be committed, inquisitive and passionate about performing arts to achieve in this excellent A level course.

WHERE CAN IT TAKE ME?

Drama can open opportunities into performing arts industry, including being an actor, theatre technician, director or presenter. Many skills learned in drama can be transferred into all manner of jobs or Higher Educational courses, such as collaboration, communication and creativity.

English Language

What will I learn and how will it help me?

English Language explores the world of words; both spoken and written. You will learn a range of new terminology – also known as Methods of Language Analysis – and then use this learning to analyse the ways in which language is manipulated to show different attitudes, to provoke response from an audience and to challenge or uphold values in society. Furthermore, you will be asked to demonstrate your writing skills under exam conditions, producing an argumentative-style essay on language diversity (which could be based on gender, power or occupation) alongside a lively opinion article on attitudes towards language. If you enjoy discovering new terminology, analysing texts using that terminology and talking about how language is used in modern society, then the A level course is for you!

How will it be assessed?

Paper One: Language, the Individual and Society
2.5 hours – 100 marks available
Examination content: Reading/Writing:
Analysing, evaluating and comparing two texts;
Discursive essay on Children's Language
40% of A level

Paper Two: Language Diversity and Change
2.5 hours – 100 marks available
Examination content: Reading/Writing:
Evaluative task on language diversity or language change.
Directed writing task on ideas in language development.
Analytical response to an idea about language use in society.
40% of A level

NEA: Language in Action, which comprises of an investigation, creative text and commentary on choices made.
2000 word investigation
750 word original text
750 word commentary on the production of the text
20% of A level



ENTRY REQUIREMENTS

Course centre requirements + minimum grade 5 in English Language.

IS THIS COURSE FOR ME?

To succeed in A level English Language, you should have a genuine interest in your own language; a spirit of adventure and inquiry; a real keenness for learning something new; a willingness to study independently and, most essentially, the ability to meet deadlines so that you are able to participate fully in classroom workshops.

WHERE CAN IT TAKE ME?

This subject will be particularly useful if you intend to pursue a career in journalism, law, business or education, as well as PR services like advertising and other media. Many of our students go on to complete their university education in English Language, Linguistics, Media or similar subjects.

Further Information:

Contact Ms Malloy
smalloy@lordlawson.academy

English Literature

What will I learn and how will it help me?

In English Literature, you will explore the relationships that exist between texts and the contexts within which they are written, received and understood. You will build on knowledge gathered at GCSE but obviously there is a much higher level of challenge in the texts you study! You will be required to read widely across a range of texts over time. Working with texts over time involves looking at ways in which authors shape meanings within their texts. It also involves thinking about a wide range of relevant contexts, some of them to do with the production of the text at the time of its writing, some to do with how the text has been received over time, and most of all, how the text can be interpreted by readers now. Because texts and their meanings are not fixed, interpretation is not fixed, and multiple interpretations are possible. To put it another way, there is never one correct answer!

How will it be assessed?

Paper One: Love through the Ages (3 hours)
Three texts: one poetry and one prose text, of which one must be written pre-1900, and one Shakespeare play. The exam will include two unseen poems.
40% of A level

Paper Two: Texts in shared contexts (2.5 hours)
Option 2B: Modern Times: literature from 1945 to the present day. Study of three texts: one prose, one poetry and one drama, of which one must be written post-2000. The exam will include an unseen extract.
40% of A level

NEA: Independent Critical Study: Texts across time

Comparative critical study of two texts, at least one of which must have been written pre-1900.

2500 word essay and a bibliography.

20% of A level



ENTRY REQUIREMENTS

Course centre requirements + minimum grade 6 in English Literature.

IS THIS COURSE FOR ME?

To succeed in this course, you will need a genuine interest in literature, a spirit of adventure and inquiry, a real keenness for learning something new, and most importantly, a willingness to read independently and widely!

WHERE CAN IT TAKE ME?

The skills you will develop in this subject will make you a highly desirable candidate for higher study and you might choose to pursue a career in journalism, publishing, marketing, law or academia.

Further Information:

Contact Ms Malloy
smalloy@lordlawson.academy

French

What will I learn and how will it help me?

You will continue to build on the four skills of listening, speaking, reading and writing, although these will not be assessed in four papers, but across three different exams at the end of the two year course. The AQA A level in French covers six broad topics, some building on familiar areas such as family and technology, while others are new such as immigration and a multicultural society. We will cover all areas of grammar, to enable you to gain a sound knowledge of all language structures, and develop your competence in applying them in your own writing and speaking. We will use predominantly French in the classroom, and support you to become more confident and fluent speakers of French. In addition, over the course of the two years, you will study a film and a book in French, where you will apply all of these skills, as well as learn about the wider issues around France and French speaking countries.

How will it be assessed?

You will be assessed through three exams:

Paper 1: Listening, Reading and Writing

Paper 2: Writing (film and literature)

Paper 3: Speaking

The speaking exam is largely based on an Individual Research Project, where you can choose an area of special interest to you, which is related to a French speaking country.

Further Information:

Contact Ms J Cross

jcross@lordlawson.academy



ENTRY REQUIREMENTS

Course centre requirements + minimum grade 6 in GCSE French including completing all 4 skills areas at higher level.

IS THIS COURSE FOR ME?

If you have a high grade or are working towards a high grade at GCSE. You enjoy working out how sentences fit together and ask or want to ask questions about the language. You really want to learn to speak more fluently, and be able to discuss wider issues in French.

WHERE CAN IT TAKE ME?

Competence in foreign language is treated with great respect in the world of work, and will set you apart in commerce, business, technology. In addition, you will develop a vast range of transferable skills, particularly communication skills – essential for any work with necessitates contact with people and the wider world.

Further Mathematics

What will I learn and how will it help me?

You will study pure mathematics, discrete mathematics and mechanics. In pure mathematics you will further your knowledge of some of the topics covered in the mathematics course, you will also meet new topics such as complex numbers and matrices. Discrete mathematics involves the use of algorithms to solve problems in networks, the analysis of two player games and group theory. In mechanics you will study collisions, circular motion and centre of mass.

How will it be assessed?

The course will be assessed by three written exams at the end of year 13, each lasting 2 hours. Papers 1 and 2 will examine pure mathematics and paper 3 discrete mathematics and mechanics. All papers include a mix of question styles, from short, single-mark questions to multi-step problems

Further Information:

Contact Mrs K Fuller
kfuller@lordlawson.academy



ENTRY REQUIREMENTS

Course centre requirements + minimum grade 7 in GCSE Mathematics.

IS THIS COURSE FOR ME?

Further mathematics is a challenging course, but the rewards can be great. This course gives you the opportunity to explore more advanced and sophisticated topics, deepen your understanding of a broad range of concepts and distinguish yourself as an able mathematician. If you like a challenge, find mathematics enjoyable and want to enhance all of your mathematics-based options then this is the course for you.

WHERE CAN IT TAKE ME?

Further mathematics can provide you with even more post-study options than A level Mathematics. Many students go on to university to study maths or to study a maths related degree subject, such as physics, engineering or computer science. Further maths is often listed as a preferred or essential A level subject by top universities for entry onto these degree courses. It is also highly respected by many employers.

Geography

What will I learn and how will it help me?

You will gain a deeper understanding of contemporary issues facing global citizens of the 21st century. We will learn about people and their societies, economies, cultures and their environments. This A level from AQA is split into a Physical Geography section, a Human Geography section and a Geographical Investigation completed both in the Academy and independently. Geography is about how all of these topics and skills interact with each other.

Some topics that you will look at are:

- Hazards (physical);
- Water and Carbon Cycles (physical);
- Coastal Landscapes (physical);
- Global Systems and Global Governance (human);
- Contemporary Urban Environments (human);
- Changing Places (human);
- As well as your fieldwork and independent course work.

There are two exams (one physical and one human) at the end of year 13, both 2.5 hours long, each worth 40%. The independent course work is worth the remaining 20%.

An A level in Geography can lead to a wide range of careers. This could be in the field of education, local government, travel and tourism, journalism, meteorology, cartography, social services, overseas development, management or international banking. You will develop a wide range of skills including writing reports, analysing and interpreting different sources of data, taking part in a team carrying out fieldwork and conducting decision-making exercises. In the past, Geography students have travelled to Iceland, Italy and Malaysian Borneo; there will be future such visits planned for the coming years.

Further Information:

Contact Mr M Surtees
msurtees@lordlawson.academy



ENTRY REQUIREMENTS

Course centre requirements + minimum grade 6 in Geography at GCSE as well as grade 5 in English Language.

IS THIS COURSE FOR ME?

Geography examines the issues of the day and is very highly regarded as an academic subject. Employers are increasingly on the look-out for people who show an awareness of the world, how people interact with their environment, how the world is governed as well as the scientific processes which shape our world. If this interests you then Geography is definitely the course for you!

WHERE CAN IT TAKE ME?

You will learn crucial skills, both traditional report and essay writing, as well as more ICT-based skills such as GPS, online mapping and traditional cartography. Geography mixes science, mathematical and statistical processing and written communication, which is why it really does encompass everything. Employers value all of these skills.

German

What will I learn and how will it help me?

You will continue to build on the four skills of listening, speaking, reading and writing, although these will not be assessed in four papers, but across three different exams at the end of the two year course. The AQA A level in German covers six broad topics, some building on familiar areas such as family and technology, while others are new such as immigration and reunification of Germany. We will cover all areas of grammar, to enable you to gain a sound knowledge of all language structures, and develop your competence in applying them in your own writing and speaking. We will use predominantly German in the classroom, and support you to become more confident and fluent speakers of German. In addition, over the course of the two years, you will study a film and a book in German, where you will apply all of these skills, as well as learn about the wider issues around Germany and being German.

How will it be assessed?

You will be assessed through three exams:

Paper 1: Listening, Reading and Writing

Paper 2: Writing (film and literature)

Paper 3: Speaking

The speaking exam is largely based on an Individual Research Project, where you can choose an area of special interest to you, which is related to a German speaking country.

Further Information:

Contact Ms J Cross

jcross@lordlawson.academy



ENTRY REQUIREMENTS

Course centre requirements + minimum grade 6 in GCSE German including completing all 4 skills areas at higher level.

IS THIS COURSE FOR ME?

If you have a high grade or are working towards a high grade at GCSE. You enjoy working out how sentences fit together and ask or want to ask questions about the language. You really want to learn to speak more fluently, and be able to discuss wider issues in German.

WHERE CAN IT TAKE ME?

Competence in foreign language is treated with great respect in the world of work, and will set you apart in commerce, business, technology. In addition, you will develop a vast range of transferable skills, particularly communication skills – essential for any work with necessitates contact with people and the wider world.

Graphics

What will I learn and how will it help me?

This is an art based qualification specialising in graphic design. The course covers all aspects of graphic design including image manipulation, visual communication and presentation, layout and typography, product design, advertising and magazine work.

Through a series of research based lessons you will independently decide on a personal direction for your work. With skills based workshops you will learn the basic principles of graphic design and begin producing a range of experiments and preparatory studies and a portfolio of design work in relation to your theme. In addition, you will learn to analyse and evaluate graphic designers work through a series of written and visual case studies.

As your portfolio progresses you will build on your specialist area of expertise and develop highly personal, professional outcomes.

The course is predominately coursework, with A level coursework being worth 60%. Your portfolio work will culminate in an externally set assignment worth 40% which is a coursework based exam ending with a supervised period of time to complete final work.

All coursework and examinations are teacher assessed.

A level Graphic design is an exciting and creative course where you will be required to do a great deal of independent work. The qualification is an excellent foundation for graphic design and media related degrees. It can lead to careers in product design, creative graphics, merchandise design, advertising and games design.

Further Information:

Contact Ms Y Murray
ymurray@lordlawson.academy



ENTRY REQUIREMENTS

Course centre requirements + minimum grade 5 in art and design or graphic design at GCSE or 4 with teacher recommendation.

IS THIS COURSE FOR ME?

Graphic design is a discipline within art and design, and focuses entirely on the development of graphic products with art and design methods. It uses more digital technology such as Photoshop and animation packages and projects are typical of that you may find in industry. You must be passionate and committed to ensure you meet the demands of the coursework units.

WHERE CAN IT TAKE ME?

Graphics is a thriving industry. Companies will employ graphic designers at some point to develop merchandise, products, packaging, illustration or advertisements. A level Graphic Design is an excellent grounding for multi media and graphic based degrees.

History

What will I learn and how will it help me?

History is a highly regarded and established subject. The skills learnt at this level are desired by universities and employers alike. If you are thinking about a career in law, politics, Civil Service, sociology, psychology, journalism, TV, radio, research, marketing or PR, then History is the subject for you. History really does open the doors to a range of careers: 'Historians stalk the corridors of power.'

On our AQA A level course, you will study an eclectic range of topics and periods. You will study Core Units on the Tudor monarchs of England from 1485 to 1603, combined with a Depth Study of Germany from the Weimar Republic to the end of Nazi rule. These two units will be assessed in an exam, at the end of Y13. Your exam will include essay questions and source/interpretations questions.

Your coursework will take the form of an independent investigation, giving you the opportunity to conduct your own research into African American civil rights! You will also have the opportunity to visit Newcastle University library, take part in the Lessons from Auschwitz Project and other local/overseas visits.

Further Information:

Contact Mr J Billingsley
jbillingsley@lordlawson.academy



ENTRY REQUIREMENTS

Course centre requirements + minimum grade 6 in GCSE History as well as a minimum grade 5 in English Language and English Literature. All students will be considered on an individual basis if they have not studied history before.

IS THIS COURSE FOR ME?

A level History is for anyone with an interest in understanding the events of the past, and how they have been interpreted. The topics and periods that we study are amongst the most influential in British, European and World History, and learning about them will shape your understanding of the world around you today.

WHERE CAN IT TAKE ME?

Historians develop a range of transferable skills that are useful in many walks of life, and are highly regarded by universities. The ability to read from a range of sources, see events from different perspectives, and give your own arguments verbally and on paper, are welcome on any writing-based course at university. History can open the door to careers in history, philosophy, law, and business.

Mathematics

What will I learn and how will it help me?

All students study pure mathematics, statistics and mechanics. Pure maths provides a thorough grounding in the mathematical tools and techniques often needed in the workplace, including topics such as logarithms, calculus, sequences and trigonometry. Mechanics deals with the action of forces on objects. In statistics you will learn how to analyse data and calculate probabilities.

How will it be assessed?

The course will be assessed by three written exams at the end of year 13, each lasting 2 hours. Paper 1 will examine pure mathematics, paper 2 pure mathematics and mechanics, and paper 3 pure mathematics and statistics. All papers include a mix of question styles, from short, single-mark questions to multi-step problems.

Further Information:

Contact Mrs K Fuller
kfuller@lordlawson.academy



ENTRY REQUIREMENTS

Course centre requirements + minimum grade 7 in GCSE Mathematics.

IS THIS COURSE FOR ME?

A level Mathematics is a challenging subject, certainly a step-up from GCSE, and many students find meeting this challenge to be deeply satisfying and rewarding. It supports and enhances the study of other mathematically-based courses. We are living in an increasingly technological society, and being mathematically literate to a high level can only be an advantage. Research has shown that A level Mathematics has a positive impact on future career earnings.

WHERE CAN IT TAKE ME?

Mathematics opens many doors to you once you have left school: Maths, Physics, Medicine, Aeronautical Engineering, Finance, Business, Computing, Law and Psychology are just some examples of areas student progress into. However, there are many other diverse areas where mathematical skills are recognised as invaluable and essential. Employers highly value an A level in Maths.

Music

What will I learn and how will it help me?

Performing, Composing and Appraising. You will create a recital of performances and compose at least two original pieces of your own. For the appraising exam we will cover a huge range of different styles and genres of Music including the Development of the Symphony; Musical Theatre; and further study of classical music "Into the Twentieth Century".

How will it be assessed?

Performing is assessed by a visiting examiner, giving a much more realistic scenario than a recording, allowing students to demonstrate their communication of the music to the listener, and giving a real sense of occasion. Composition is assessed through two pieces: one written in a Western Classical Style in response to a chosen brief, and one free piece which can be in any style, allowing candidates to demonstrate and develop their personal specialisms. There will be a 3 hour written paper which will incorporate the listening and analytical aspects of the course.

Further Information:

Contact Mrs R Hall
rhall@lordlawson.academy

* The final choice of course: BTEC or A Level Music will be agreed with students.



ENTRY REQUIREMENTS

You will need to have studied GCSE Music and the standard level of performance expected for the A level recital is Grade VI.

IS THIS COURSE FOR ME?

The word "music" covers a huge range of different styles and genres, and each one of us has our own preferences and interests. If you love analysing music and delving deeper into the way music is created, and if you love writing your own works as well as developing your performance skills to a higher level, then this is the course for you!

WHERE CAN IT TAKE ME?

Music will enable you to demonstrate many skills which employers, colleges and universities will be looking for. It can also give you opportunities to travel, meet people and get the most out of life. Many students have continued to study Music at Music College or Universities. Some students have started careers in performance and tuition.

Photography

What will I learn and how will it help me?

This is an art and design qualification specialising in photography. The course covers a wide range of photography techniques including digital imaging and theoretical studies. In the first year you will complete one major portfolio project. Through a series of workshops you will learn the basic skills of practical photography and produce preparatory studies and final images in relation to your theme. In addition you will learn to analyse and evaluate photographers' work through a series of written and visual case studies.

In the second year you will develop your skills further and produce a more in depth coursework unit. You will also be set a controlled test over a specified period of time culminating in a 15 hour exam.

The coursework is worth 60% and controlled test 40%. The photography course is extremely demanding and you will be required to do a great deal of independent work.

Further Information:

Contact Ms Y Murray
ymurray@lordlawson.academy

*** Photography must be taken in the graphics option block and you must have previously studied Photography at KS4 to your target grade in order to take it at A level.**



ENTRY REQUIREMENTS

Course centre requirements + minimum grade 5 in GCSE Photography. Students will be considered on an individual basis if they have not studied GCSE Photography before but have a grade 5 in art or graphics.

IS THIS COURSE FOR ME?

Photography focuses entirely on the development of photographic process with art and design concepts. It uses more digital technology such as Photoshop and animation packages and projects are typical of what you may find in industry. Although heavily leaning towards digital media it is essentially an art based course. It is a demanding subject with predominately coursework based units so it is essential that students are committed.

WHERE CAN IT TAKE ME?

A level Photography is a great grounding for all digital media, multi media and photography based degrees. It is essential for those wishing to pursue a career within digital creative industries such as journalism or advertising.

Physical Education

What will I learn and how will it help me?

Do you ever wonder how the systems in the human body work together to produce the perfect sporting performance? Or why different athletes thrive under pressure and others do not? Did you ever consider how athletes can manipulate their diet to give them an edge over their competitors? Have you ever considered the impact of drugs on sports performance at the highest levels?

This course will offer an array of opportunities to students that cross over into a variety of other subject areas such as psychology, sociology and biology. A level P.E. leads students on a journey through a variety of topics from a sporting perspective such as that of an athlete, coach, spectator or a member of the media. Learners will develop transferable skills that are in demand by higher education institutes and employers in all sectors.

Theory Content (70%)

This part of the course is delivered through six distinct topic areas;

- Applied Anatomy & Physiology
- Exercise Physiology
- Biomechanical Movement
- Skill Acquisition
- Sports Psychology
- Sport & Society and the role of technology

This element of the course will be assessed through two exam papers which will be sat at the end of year 13.

Non-Examined Assessment (30%)

Students are provided with an opportunity to utilise their expertise in a sporting environment. Students are assessed as a performer or coach in the full sided version of one activity. Through coursework students analyse and evaluate their strengths and weaknesses in competitive sport.



ENTRY REQUIREMENTS

Course centre requirements + minimum grade 4 in GCSE or a Level 2 Merit if studying Cambridge National. All students will be considered on an individual basis if they have not studied P.E. previously. Students are required to represent a sports team or compete on an individual basis outside of school. Students must be good role models for the P.E. department.

IS THIS COURSE FOR ME?

If you are intrigued or inspired by the world of sport this course is for you! If you enjoy the challenges of theory and practical work. If you are already performing in a sport and want your dedication to be recognised.

WHERE CAN IT TAKE ME?

This course provides an excellent foundation for those intending to pursue a career in sport, biology, sociology or psychology in any setting. It is essential for students who want to pursue a career in P.E. teaching, coaching, health and fitness, recreational management and the leisure industry.

Further Information:

Contact Mr G Thompson
gthompson@lordlawson.academy

Physics

What will I learn and how will it help me?

Have you ever wondered:

- Why is lightning attracted to a church spire?
- Can you get electricity out of a potato?
- Why is a shock from 240V mains more dangerous than a shock from a 5000V power pack?
- What is different about light from the sun during an eclipse?
- What would happen if you met your antimatter twin?

You will find out the answers to all these questions if you study A level Physics. Physics can qualify you for a whole range of higher education courses and careers including architecture, engineering, medicine, optics, space science and many more.

How will it be assessed?

3 x 2 hour papers at the end of year 13 plus an ongoing practical skills assessment over the length of the course.

Further Information:

Contact Miss J Frater
jfrater@lordlawson.academy

Contact Mr P Boxall
acarruthers@lordlawson.academy



ENTRY REQUIREMENTS

Course centre requirements + minimum grade 6 in either physics or combined science. Grade 6 in maths.

IS THIS COURSE FOR ME?

"As I have said so many times, God doesn't play dice with the world." Albert Einstein 1928. A level Physics teaches you about the rules of the Universe. If you have an inquisitive and logical mind and you enjoy a bit of maths then let A level Physics take you on a voyage through the micro to macroscopic Universe.

WHERE CAN IT TAKE ME?

A physics qualification opens the doors to all sorts of jobs and courses. All the technology that surrounds us is based on the principles of physics, so if you are considering working in any area related to technology from music to medicine, or lasers to law – studying physics is an essential first step.

Politics

What will I learn and how will it help me?

Past, present, future – Politics is everywhere we look. And it's changing. Decisions that are made in government and other institutions can have a huge effect on our lives and the lives of others. Studying politics will give you a good understanding of the factors that are driving change all around us and how to make a difference yourself. Unless we understand how the government works, we will be able to play a full and active part in society. We will seek to understand the crucial questions of where power lies and 'who gets what and why?'

Topics covered are:

1. Government and politics of the UK
2. Government and politics of the USA and comparative politics
3. Political ideas

Some of the questions that will be raised are: Who makes decisions? What rights do we have? Can the existence of the monarchy be justified? Does the media influence or reflect public opinion? Why do some people not use their vote? Why do some groups resort to terrorism to achieve their aims?

There will be 3 written exams at the end of year 13. All 3 exams are 2 hours long and worth 80 marks and 33.3% each. We will follow the Edexcel specification.

Further Information:

Contact Mr A Clarke
aclarke1@lordlawson.academy



ENTRY REQUIREMENTS

Course centre requirements plus a grade 6 in English Language or Literature (high grade 5s may be eligible with teacher recommendation) and a grade 6 in geography or history or RE. Again, high grade 5s may be eligible with teacher recommendation.

IS THIS COURSE FOR ME?

You will develop a critical awareness of the changing nature of politics and the relationships between political ideas, political institutions and political processes. Students will acquire knowledge and understanding of the structures of authority and power within the political system.

WHERE CAN IT TAKE ME?

The Russell Group universities regard Politics A level as one of the key challenging subjects that allow entry to the most prestigious courses at undergraduate level. It is seen as a traditional academic subject providing evidence of a student's ability to produce detailed written arguments, reaching valid judgements based on strong analysis of supporting evidence. As a result, it is a subject that will help with almost all degrees and it is considered particularly useful for any humanities subject, modern foreign languages and law.

Psychology

What will I learn and how will it help me?

Have you ever wondered why humans act the way they do? Psychology looks to draw insights into what influences behaviour and why people develop in certain ways. Psychology is the study of human behaviour. Some of the topics that you will study include:

- Why does stress lead to illness?
- What are the consequences of putting young children into day care?
- Are we born with different levels of aggression or do we learn them?
- How reliable is eye-witness testimony?
- Why do people follow instructions?
- Why do some people follow the crowd?

A level Psychology incorporates science, maths and extended writing skills and will be a great foundation for many university courses. Related careers that you may wish to progress into include: clinical psychology, educational psychology, mental health work, nursing, counselling psychology, occupational psychology, forensic psychology, criminal psychology and many more...

Further Information:

Contact Mrs A Rutherford
arutherford@lordlawson.academy



ENTRY REQUIREMENTS

Course centre requirements + minimum
 A grade 6 in English and maths grade 5s
 may be eligible with teacher
 recommendation) and a minimum of a
 grade 5 in biology or science.

IS THIS COURSE FOR ME?

You will develop scientific enquiry and analytical skills. It will encourage you to plan and design research. The A2 section of the course requires good essay and extended writing skills.

WHERE CAN IT TAKE ME?

Higher Education and then go on to a career in psychology for example as a clinical psychologist, an educational psychologist or a forensic psychologist. Psychology would also be advantageous for those wishing to work in nursing, the Police Force, human resources etc.

Sociology

What will I learn and how will it help me?

In essence, you'll learn how society works, how it's influenced and how it has changed and will continue to change into the future. In these recent times, societal change has been huge. Sociology offers thoughts and insights into this, such as:

- Why do girls out-perform boys in school?
- Why does gender influence the chances of being a victim of crime?
- How does ethnicity affect our life-chances?
- Why does social media-use differ with age?

A level Sociology helps you to develop knowledge and understanding of the essential sociological theories and methods (such as Functionalism, Marxism and Feminism) with which sociologists make sense of the diversity of societies, and of the forces which have and will continue to shape social change in the UK, and beyond, today.

Sociology will help you to think about society in a new and critical light, questioning the status quo and developing a sophisticated understanding of the real issues that affect the society we live in. It is an excellent subject for showing you how society works and for making you aware of the range of conditions that individuals within society experience.

Some topics that you'll study:

- Sociology Theory and Methods;
- The Sociology of Education;
- The Sociology of Crime and Deviance;
- Culture and Identity or Families and Households;
- Global Development or The Media.

There will be 3 written exams at the end of year 13. All 3 exams are 2 hours long and worth 80 marks and 33.3% each. We will follow the AQA specification 7192.

Further Information:

Contact Mrs A Rutherford

arutherford@lordlawson.academy

or Miss F Cairns fcairns@lordlawson.academy



ENTRY REQUIREMENTS

Course centre requirements plus a grade 6 in English Language or Literature (high grade 5s may be eligible with teacher recommendation) and a grade 6 in geography or history or RE. Again, high grade 5s may be eligible with teacher recommendation.

IS THIS COURSE FOR ME?

You should be interested in reading the news on a daily basis to be able to relate the topics learnt in class to the outside world. Above all you need an outward-looking perspective on the world, and to have a degree of empathy. It will be most enjoyable to those students that are open-minded, non-judgmental, hard-working and with a genuine interest in the human-built world in which we live.

WHERE CAN IT TAKE ME?

Sociology provides an excellent starting point for any social science degree from economics, psychology, politics, criminology and philosophy. An A level, and degree, in sociology can lead to many career options including teaching, advertising, research, marketing and business and civil service work for the government. Sociology teaches you transferable skills that are in high-demand from universities and employers alike.

Don't just take our word...

"I would highly recommend Lord Lawson Sixth Form as it is a friendly, safe and supportive Sixth Form. I also had a lot of fun through my A levels with my peers. The various fundraising days such as Children in Need were fun and made us all feel together."

Past Sixth Form student

"The level of support Lord Lawson Sixth Form can offer you is incredible. I felt so overwhelmed by how kind the members of staff are, they genuinely care so much about your well-being and really want to see you do well."

I felt as though I could tell all of the Sixth Form staff any worry I had and they would make sure it was sorted and nothing was too much bother to them."

Past Sixth Form student

"Sixth Form offers brilliant staff who have supported me through the process of transitioning from school to Sixth Form. There are also number of excellent extracurricular activities such as Macmillan Coffee mornings and Children in Need fancy dress days."

Current student, Yr 12

"The support here is much better, I don't think I would have got the grades I got here if I'd stayed at college."

Past Sixth Form student

"Sixth Form has been fantastic! School continue to support my daughter academically and emotionally. I have no doubt the support she receives has enabled her to reach her full potential. She is happy and confident."

Parent

"At Lord Lawson, I genuinely feel like the staff care about my well-being and education, and work to make me feel welcome here every day."

Current student, Yr 12

"I needed the change. I'm glad I came to Lord Lawson Sixth Form."

Current student, Yr 13

"I would recommend Lord Lawson Sixth Form as an ex-student as the Sixth Form has continued to support me after my studies and has been amazing in ensuring that I'm still on the right path to higher education."

Past Sixth Form student

"I came back to Sixth Form as the environment was perfect for helping me manage my anxiety. I have been offered a lot of support throughout my time at lower school and while at Sixth Form. I also had a good established relationship with my teachers within my chosen subjects, therefore I wanted to stay at LLOB and continue this."

Current student, Yr 12



LLoB Sixth Form

- Experienced and well qualified A level teaching, with high levels of success rates, provided by specialist subject teachers
- A high quality £1 million Independent Learning Centre with up to date technology and dedicated social space
- Specialist teams of pastoral tutors work with students on aspirational target grades to help students to reach their full potential by providing guidance and assistance
- Regular communication with students and parents through a dedicated pastoral team
- Comprehensive enrichment programme providing a whole education supporting students to reach their chosen destination

Contact us

Lord Lawson of Beamish Academy, Birtley Lane, Birtley, Co. Durham, DH3 2LP

T: 0191 433 4026 | E: lordlawson@lordlawson.academy | W: lordlawson.academy